

APP CRS	Rwy Idg	N/A
180°	TDZE	N/A
	Apt Elev	329

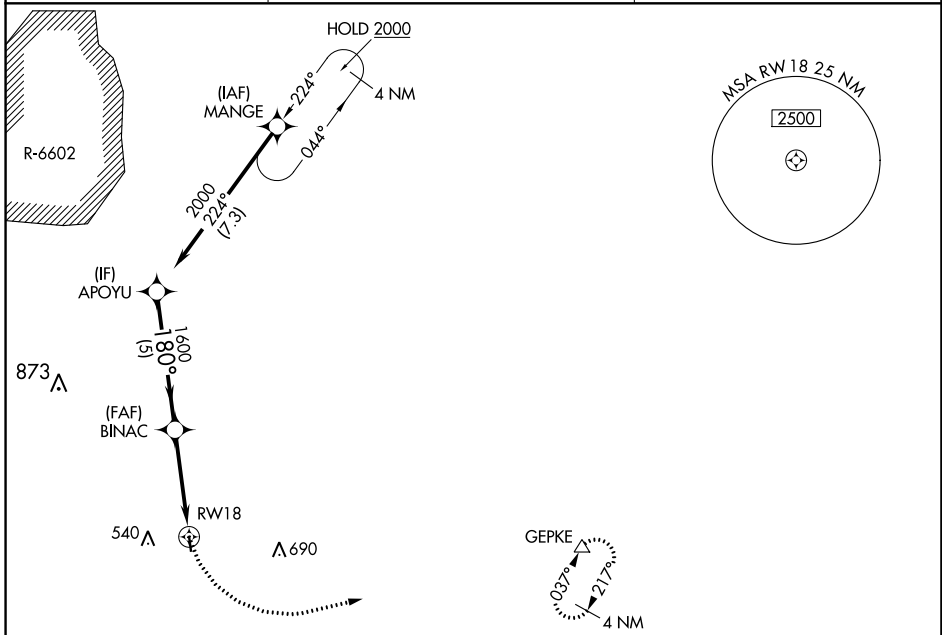
RNAV (GPS)-A
BRUNSWICK COUNTY (LVL)

RNP APCH.

▼ Procedure NA at night. Helicopter visibility reduction below 1 SM NA. When local altimeter setting not received, use South Hill altimeter setting and increase call MDA 60 feet.
▲

MISSED APPROACH: Climbing left turn to 4000 direct GEPKE and hold, continue climb-in-hold to 4000.

AWOS-3 119.625	WASHINGTON APP CON 118.75 377.1	UNICOM 122.8 (CTAF)
--------------------------	---	-------------------------------



NE-3, 28 NOV 2024 to 26 DEC 2024

NE-3, 28 NOV 2024 to 26 DEC 2024



APOYU	Visual Segment - Obstacles.		4000	GEPKE
2000	180°	BINAC		△
		1600		
		RW18		
	5 NM	3.9 NM		
CATEGORY	A	B	C	D

CIRCLING	1340-3	1011 (1100-3)	NA
-----------------	--------	---------------	----