

WAAS CH 90307 W20A	APP CRS 203°	Rwy Idg TDZE Apt Elev	5197 827 827
--	------------------------	-----------------------------	---

RNAV (GPS) RWY 20

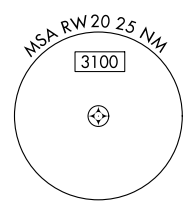
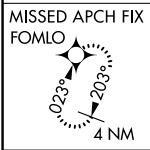
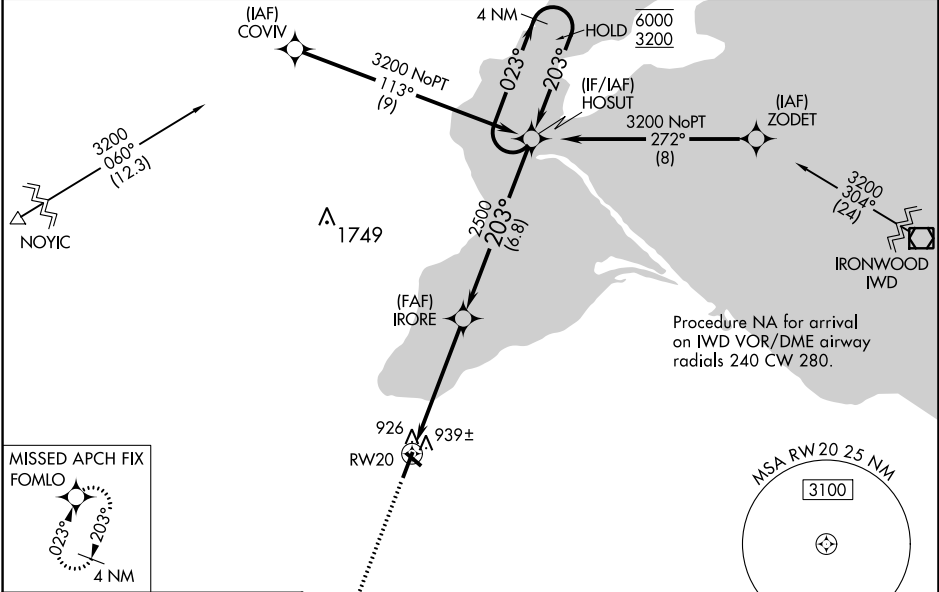
JOHN F KENNEDY MEML (ASX)

RNP APCH.

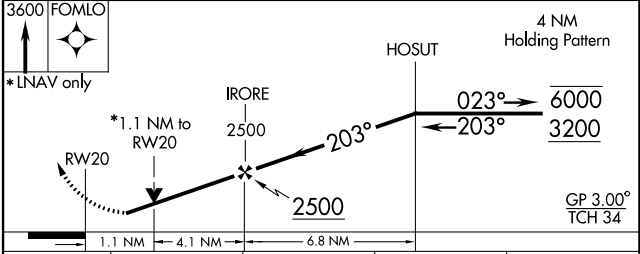
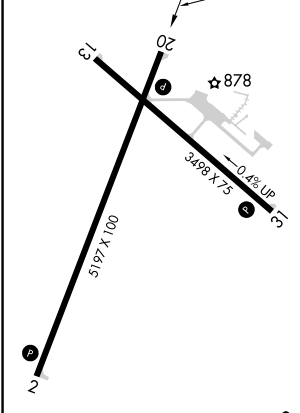
⚠ Baro-VNAV and VDP NA when using Ironwood altimeter setting. Rwy 20 helicopter visibility reduction below 3/4 SM NA. For uncompensated Baro-VNAV systems, LNAV/VNAV NA below -22°C or above 54°C. When local altimeter setting not received, use Ironwood altimeter setting: increase LPV DA to 1260 feet and all visibilities 1/2 SM; increase LNAV/VNAV DA to 1256 feet and all visibilities 1/2 SM; increase all MDA 140 feet and LNAV visibility Cat C/D 3/8 SM and Circling visibility Cat C/D 1/2 SM.

MISSED APPROACH:
Climb to 3600 direct FOMLO and hold.

ASOS 126.775	MINNEAPOLIS CENTER 126.45 276.4	GCO 122.25	UNICOM 122.8 (CTAF) 📻
------------------------	---	----------------------	--



ELEV 827	TDZE 827
----------	----------



CATEGORY	A	B	C	D
LPV DA		1128-1	301 (400-1)	
LNAV/VNAV DA		1124-1	297 (300-1)	
LNAV MDA		1200-1	373 (400-1)	
C CIRCLING	1240-1 413 (500-1)	1280-1 453 (500-1)	1440-1 3/4 613 (700-1 3/4)	1560-2 1/4 733 (800-2 1/4)

EC-3, 28 NOV 2024 to 26 DEC 2024

EC-3, 28 NOV 2024 to 26 DEC 2024