

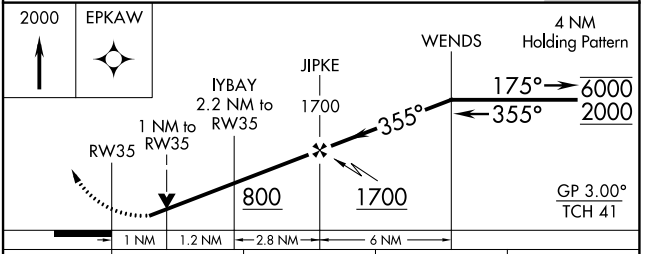
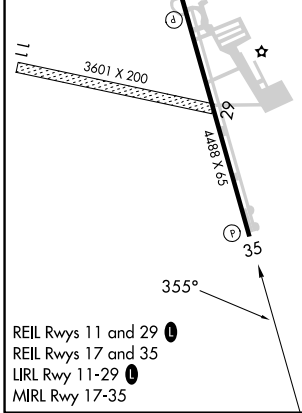
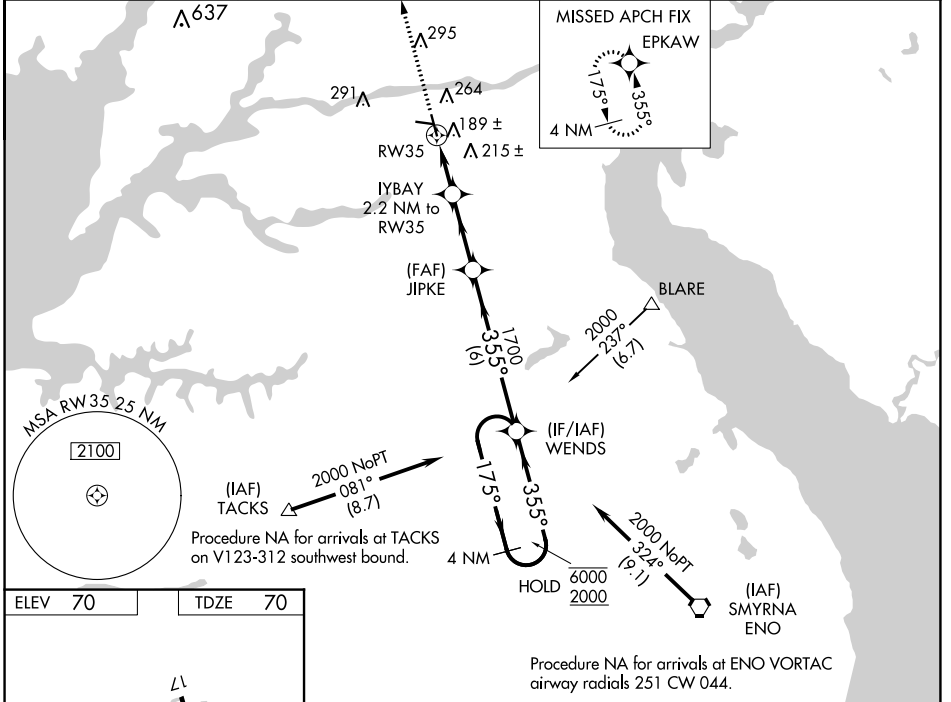
WAAS CH <b>40302</b> <b>W35A</b>	APP CRS <b>355°</b>	Rwy Idg TDZE Apt Elev	<b>4488</b> <b>70</b> <b>70</b>
--	------------------------	-----------------------------	---------------------------------------

# RNAV (GPS) Z RWY 35

SUMMIT (E VY)

RNP APCH - GPS.		MISSED APPROACH: Climb to 2000 direct EPKAW and hold.	
		Rwy 35 helicopter visibility reduction below 3/4 SM NA. For uncompensated Baro-VNAV systems, LNAV/VNAV NA below -15°C or above 54°C.	

AWOS-3 <b>132.325</b>	PHILADELPHIA APP CON <b>118.35 323.1</b>	UNICOM <b>122.725</b> (CTAF)	<b>123.5</b>
--------------------------	---	---------------------------------	--------------



CATEGORY	A		B		C		D	
LPV DA	320-3/4		250 (300-3/4)					
LNAV/VNAV DA	385-7/8		315 (400-7/8)					
LNAV MDA	440-1		370 (400-1)					

NE-3, 28 NOV 2024 to 26 DEC 2024

NE-3, 28 NOV 2024 to 26 DEC 2024