

(PADRZ2.PADRZ) 22027

PADRZ TWO DEPARTURE (RNAV)

AL-5401 (FAA)

MONTGOMERY-GIBBS EXEC (MYF)
SAN DIEGO, CALIFORNIA

ATIS
126.9
MONTGOMERY TOWER*
119.2 269.4 (Rwys 5, 10L/R, 23, 28L)
125.7 269.4 (Rwy 28R)
SOCAL DEP CON
119.6 363.1

**TOP ALTITUDE:
15000**



DEPARTURE ROUTE DESCRIPTION

TAKEOFF RUNWAYS 10L/10R: Climbing right turn heading 270° to 2000, expect vectors to cross GYWNN at or above 8000, then on track 308° to PADRZ, thence. . . .

TAKEOFF RUNWAY 23: Climbing right turn heading 270° to 2000, expect vectors to cross GYWNN at or above 8000, then on track 308° to PADRZ, thence. . . .

TAKEOFF RUNWAYS 28L/28R: Climbing left turn heading 270° to 2000, expect vectors to cross GYWNN at or above 8000, then on track 308° to PADRZ, thence. . . .

. . . .on (transition). Maintain 15000. Expect higher altitude 10 minutes after departure.

CHKNN TRANSITION (PADRZ2.CHKNN)

DINTY TRANSITION (PADRZ2.DINTY)

IKAYE TRANSITION (PADRZ2.IKAYE)

MALIT TRANSITION (PADRZ2.MALIT)

OROSZ TRANSITION (PADRZ2.OROSZ)

SHAFTER TRANSITION (PADRZ2.EHF)

NOTE: RNAV 1.

NOTE: RADAR required.

NOTE: Turbojets and turboprops only.

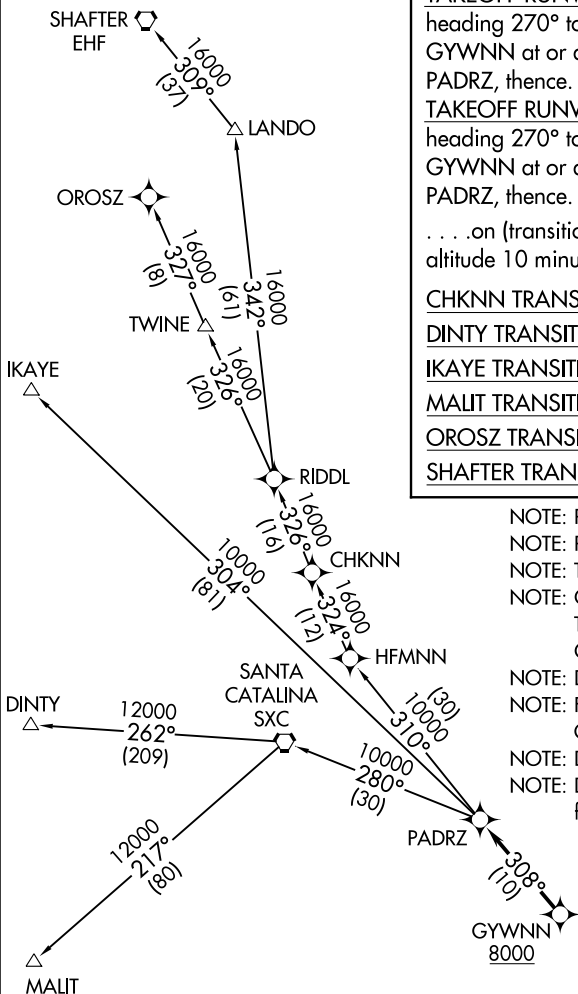
NOTE: CHKNN, SHAFTER, IKAYE, OROSZ TRANSITIONS: DME/DME/IRU or GPS required.

NOTE: DINTY, MALIT TRANSITIONS: GPS only.

NOTE: For non-GPS equipped aircraft, Oceanside (OCN) must be operational.

NOTE: DINTY TRANSITION ATC assigned only.

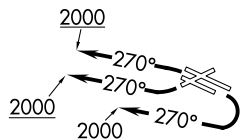
NOTE: DINTY and MALIT TRANSITIONS NA from SEE, SDM and RNM airports.



TAKEOFF MINIMUMS

Rwy 5: NA-ATC.
Rwys 10L/10R, 23, 28L/R: Standard.

NOTE: Chart not to scale.



PADRZ TWO DEPARTURE (RNAV)

(PADRZ2.PADRZ) 07DEC17

SAN DIEGO, CALIFORNIA
MONTGOMERY-GIBBS EXEC (MYF)

SW-3, 28 NOV 2024 to 26 DEC 2024

SW-3, 28 NOV 2024 to 26 DEC 2024