

WAAS CH 40237 W14A	APP CRS 141°	Rwy ldg TDZE Apt Elev	3851 1117 1122
--	------------------------	-----------------------------	---

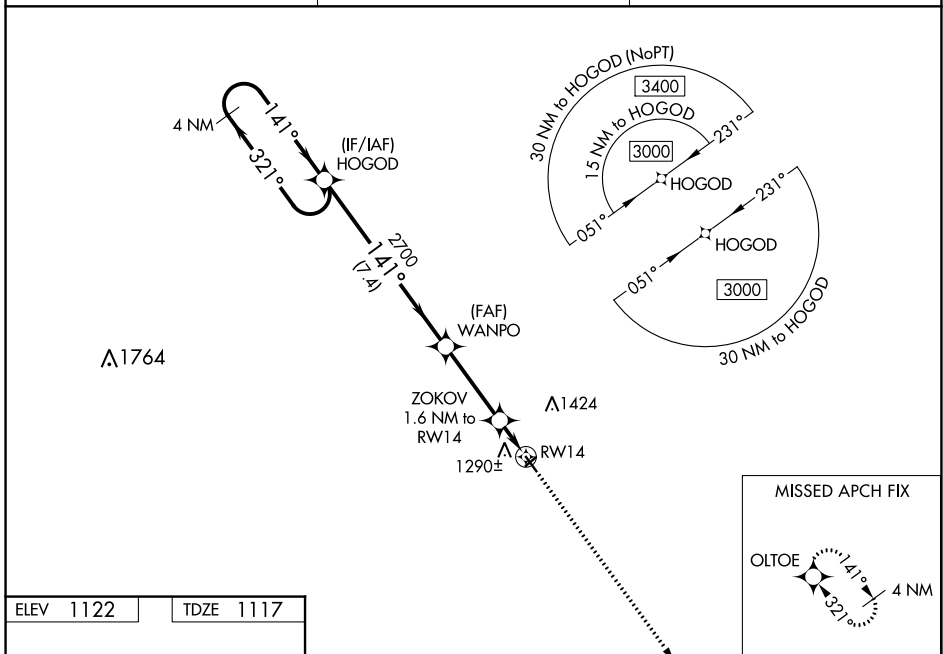
RNAV (GPS) RWY 14

WEBSTER CITY MUNI (EBS)

⚠ Baro-VNAV NA when using Clarion altimeter setting. For uncompensated Baro-VNAV systems, LNAV/VNAV NA below -17°C (2°F) or above 54°C (130°F). DME/DME RNP-0.3 NA. When local altimeter setting not received, use Clarion altimeter setting and increase all DAs 49 feet, and all MDA 60 feet; increase LNAV/VNAV all Cats visibility 1/8 mile. Helicopter visibility reduction below 3/4 SM NA.

MISSED APPROACH: Climb to 3000 direct OLTOE and hold.

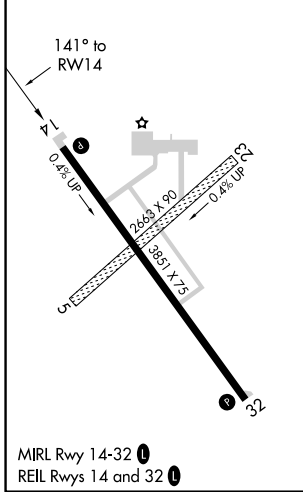
AWOS-3 127.825	MINNEAPOLIS CENTER 134.0 288.3	UNICOM 122.8 (CTAF) 0
--------------------------	--	---------------------------------



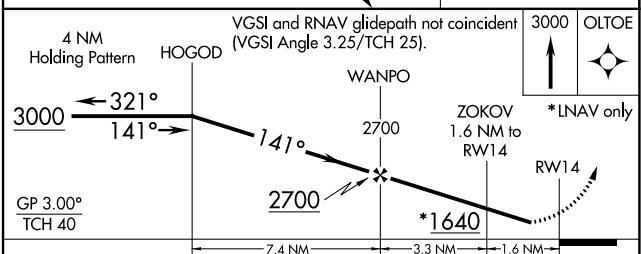
NC-3, 28 NOV 2024 to 26 DEC 2024

NC-3, 28 NOV 2024 to 26 DEC 2024

ELEV 1122	TDZE 1117
------------------	------------------



MIRL Rwy 14-32 **0**
REL Rwy 14 and 32 **0**



CATEGORY	A	B	C	D
LPV DA	1367-1	250 (300-1)		NA
LNAV/VNAV DA	1463-1 1/4	346 (400-1 1/4)		NA
LNAV MDA	1540-1	423 (500-1)		NA
C CIRCLING	1600-1	478 (500-1)		NA