

| | | |
|--|------------------------|---|
| WAAS CH 90516 W32A | APP CRS 321° | Rwy Idg 3851 TDZE 1122 Apt Elev 1122 |
|--|------------------------|---|

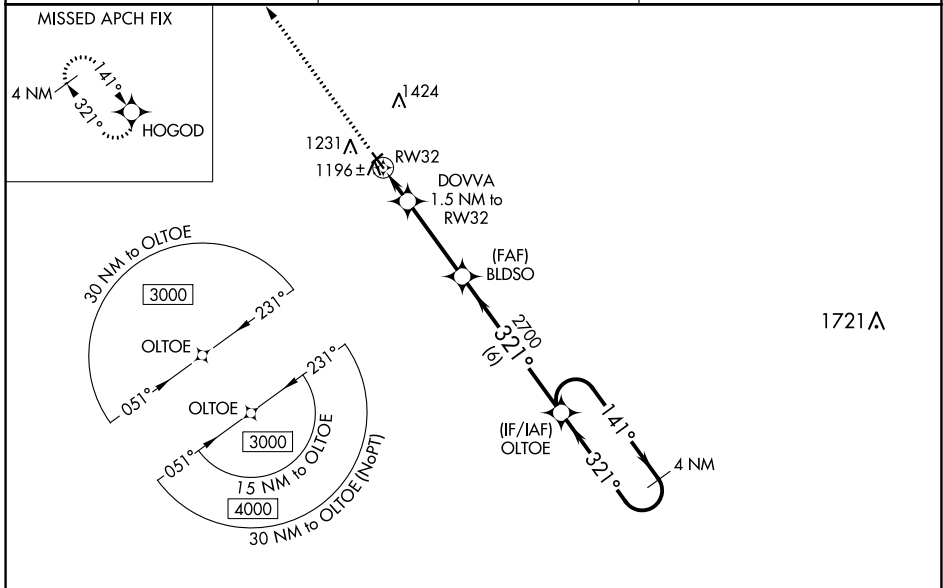
RNAV (GPS) RWY 32

WEBSTER CITY MUNI (EBS)

⚠ For uncompensated Baro-VNAV systems, LNAV/VNAV NA below -17°C (2°F) or above 54°C (130°F). DME/DME RNP-0.3 NA. When local altimeter setting not received, use Clarion altimeter setting and increase all DA 49 feet and all MDA 60 feet. Baro-VNAV and VDP NA when using Clarion altimeter setting. Helicopter visibility reduction below 3/4 SM NA.

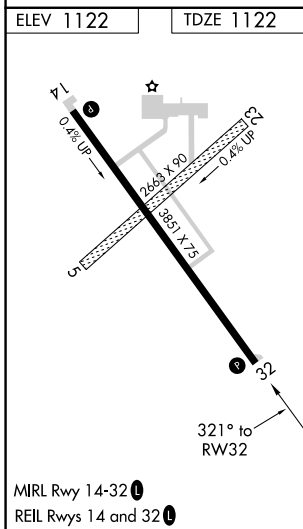
MISSED APPROACH: Climb to 3000 direct HOGOD and hold.

| | | |
|--------------------------|--|---------------------------------|
| AWOS-3 127.825 | MINNEAPOLIS CENTER 134.0 288.3 | UNICOM 122.8 (CTAF) 0 |
|--------------------------|--|---------------------------------|



NC-3, 28 NOV 2024 to 26 DEC 2024

NC-3, 28 NOV 2024 to 26 DEC 2024



| | | | | | |
|--|-----------|---|---|----|--|
| ELEV 1122 | TDZE 1122 | <p>3000 HOGOD VGSi and RNAV glidepath not coincident (VGSi Angle 3.00/TCH 30).</p> <p>*LNAV only.</p> <p>DOVVA 1.5 NM to RW32</p> <p>BLDSDO 2700</p> <p>OLTOE 4 NM Holding Pattern</p> <p>RW32 1620*</p> <p>GP 3.00° TCH 40</p> | | | |
| CATEGORY | A | B | C | D | |
| LPV DA | 1372-1 | 250 (300-1) | | NA | |
| LNAV/VNAV DA | 1372-1 | 250 (300-1) | | NA | |
| LNAV MDA | 1460-1 | 338 (400-1) | | NA | |
| <input checked="" type="checkbox"/> CIRCLING | 1600-1 | 478 (500-1) | | NA | |