

WAAS CH 86304 W20A	APP CRS 196°	Rwy Idg TDZE 724 Apt Elev 724	4599
--	------------------------	---	-------------

RNAV (GPS) RWY 20

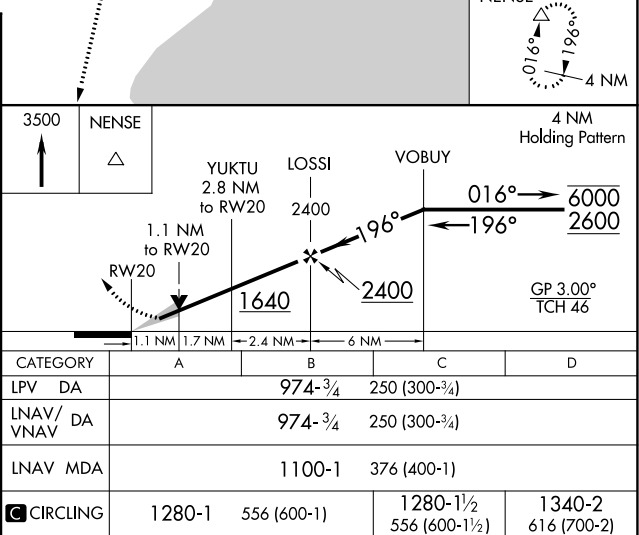
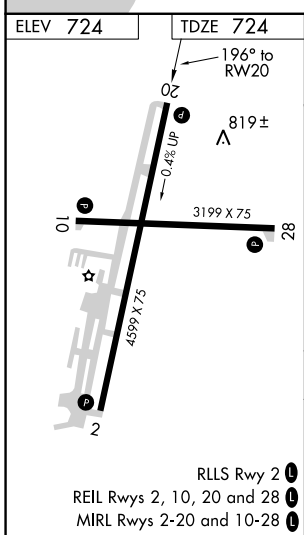
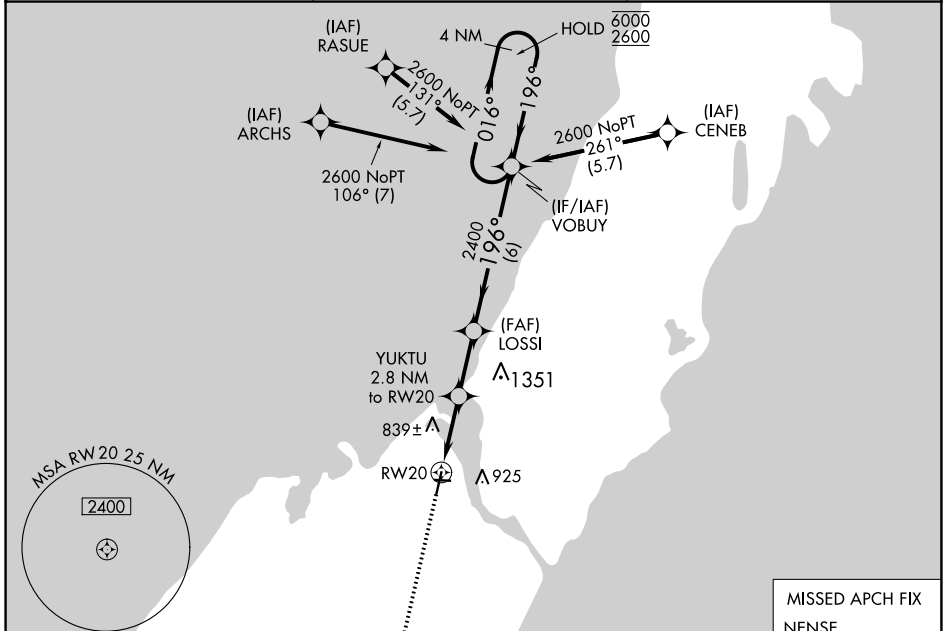
DOOR COUNTY CHERRYLAND (SUE)

RNP APCH - GPS.

For uncompensated Baro-VNAV systems, LNAV/VNAV NA below -16°C or above 54°C.

MISSED APPROACH: Climb to 3500 direct NENSE and hold.

AWOS-3PT 128.325	GREEN BAY APP CON ★ 119.25 338.2	UNICOM 122.7 (CTAF) 0
----------------------------	--	---------------------------------



EC-3, 28 NOV 2024 to 26 DEC 2024

EC-3, 28 NOV 2024 to 26 DEC 2024