

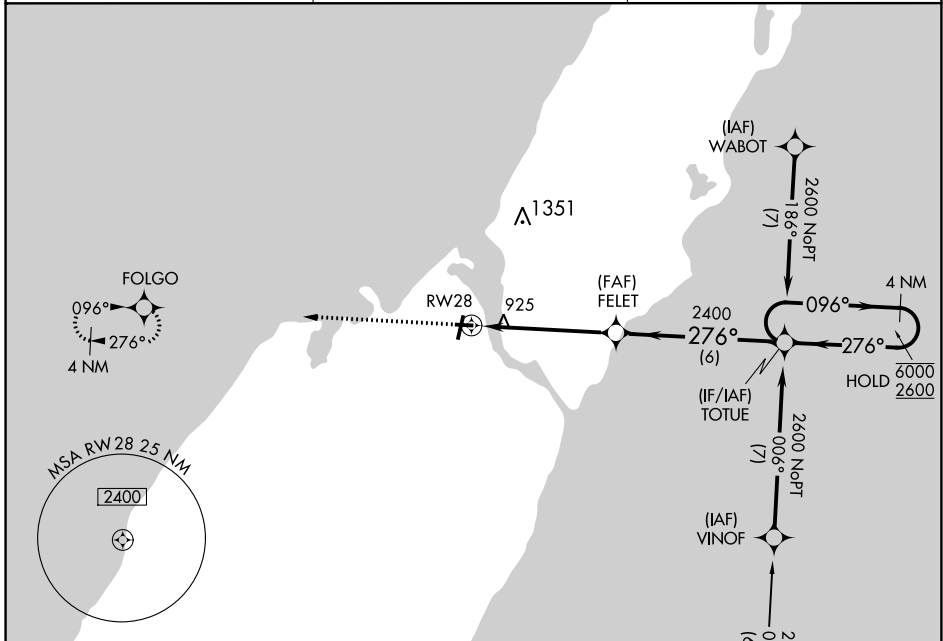
APP CRS	Rwy Idg	3199
276°	TDZE	719
	Apt Elev	724

RNAV (GPS) RWY 28

DOOR COUNTY CHERRYLAND (SUE)

RNP APCH - GPS.	MISSED APPROACH: Climb to 2600 direct FOLGO and hold.
Rwy 28 helicopter visibility reduction below 3/4 SM NA.	

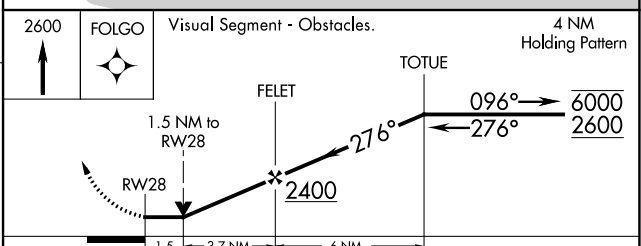
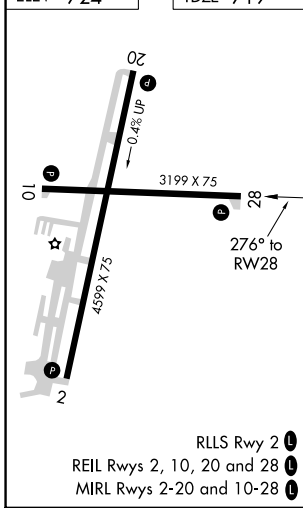
AWOS-3PT 128.325	GREEN BAY APP CON ★ 119.25 338.2	UNICOM 122.7 (CTAF)
----------------------------	--	-------------------------------



EC-3, 28 NOV 2024 to 26 DEC 2024

EC-3, 28 NOV 2024 to 26 DEC 2024

ELEV 724	TDZE 719
----------	----------



CATEGORY	A	B	C	D
LNNAV MDA	1240-1	521 (600-1)	1240-1½ 521 (600-1½)	NA
CIRCLING	1280-1	556 (600-1)	1280-1½ 556 (600-1½)	NA