

BORRN SIX DEPARTURE (RNAV)

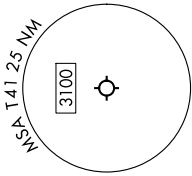
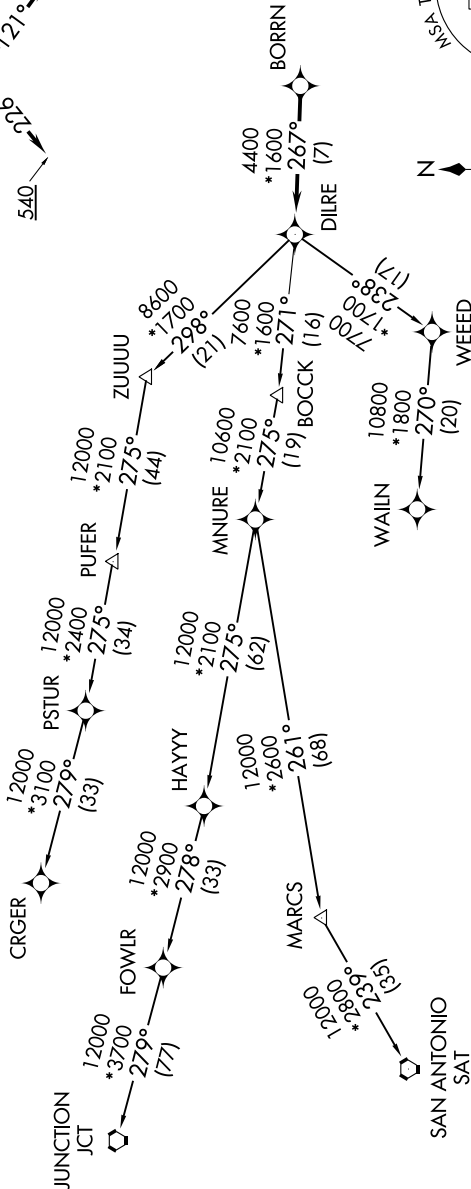
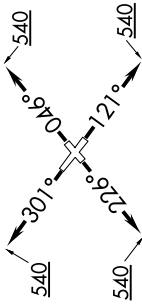
SC-5, 28 NOV 2024 to 26 DEC 2024

CTAF 122.7
CLNC DEL 125.6
HOUSTON DEP CON 134.45 284.0

RNAV 1 - DME/DME/IRU or GPS.
RADAR required.

TOP ALTITUDE:
ASSIGNED BY ATC

TAKEOFF MINIMUMS
Rwy's 5, 12, 23, 30: Standard with minimum climb of 500'/NM to 540.



NOTE: CRGR-TRANSITION ATC assigned only for aircraft departing 54T, AXH, EFD, GLS, HPY, IWS, LBX, LVJ, SGR, TME, T00, T41.

(NARRATIVE ON FOLLOWING PAGE)

NOTE: Chart not to scale.

BORRN SIX DEPARTURE (RNAV)