

(INDIE8.INDIE) 21280

AL-5433 (FAA)

LA PORTE MUNI (T41)  
LA PORTE, TEXAS

# INDIE EIGHT DEPARTURE (RNAV)

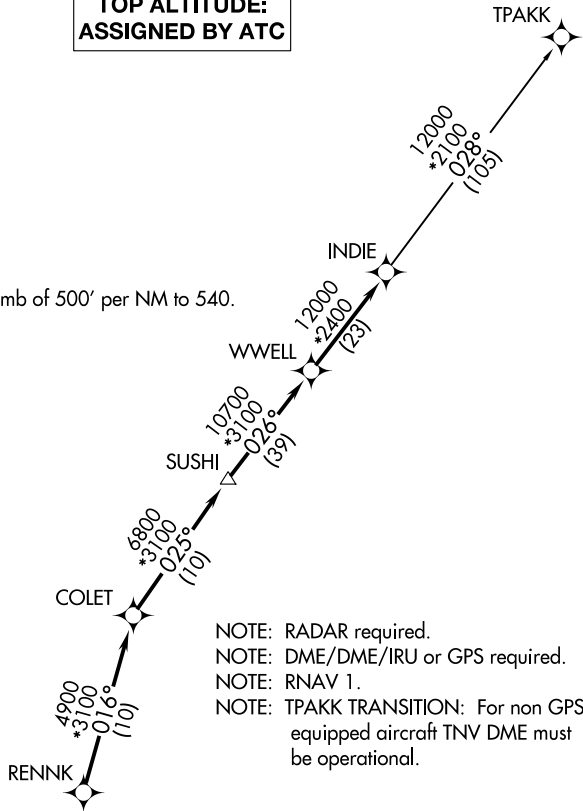
CLNC DEL  
125.6  
CTAF  
122.7  
HOUSTON DEP CON  
134.45 284.0

**TOP ALTITUDE:  
ASSIGNED BY ATC**

### TAKEOFF MINIMUMS

Rwys 5, 12, 23, 30:

Standard with minimum climb of 500' per NM to 540.



- NOTE: RADAR required.
- NOTE: DME/DME/IRU or GPS required.
- NOTE: RNAV 1.
- NOTE: TPAKK TRANSITION: For non GPS equipped aircraft TNV DME must be operational.

### DEPARTURE ROUTE DESCRIPTION

TAKEOFF RUNWAY 5: Climb on heading 046° to 540 for RADAR vectors to RENNK, thence . . .

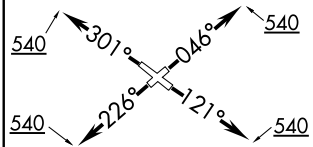
TAKEOFF RUNWAY 12: Climb on heading 121° to 540 for RADAR vectors to RENNK, thence . . .

TAKEOFF RUNWAY 23: Climb on heading 226° to 540 for RADAR vectors to RENNK, thence . . .

TAKEOFF RUNWAY 30: Climb on heading 301° to 540 for RADAR vectors to RENNK, thence . . .

. . . on track 016° to COLET, then on track 025° to SUSHI, then on track 026° to WWELL, then on track 026° to INDIE, then on (transition). Maintain ATC assigned altitude. Expect filed altitude 10 minutes after departure.

TPAKK TRANSITION (INDIE8.TPAKK)



NOTE: Chart not to scale.

# INDIE EIGHT DEPARTURE (RNAV)

(INDIE8.INDIE) 07OCT21

LA PORTE, TEXAS  
LA PORTE MUNI (T41)

SC-5, 28 NOV 2024 to 26 DEC 2024

SC-5, 28 NOV 2024 to 26 DEC 2024