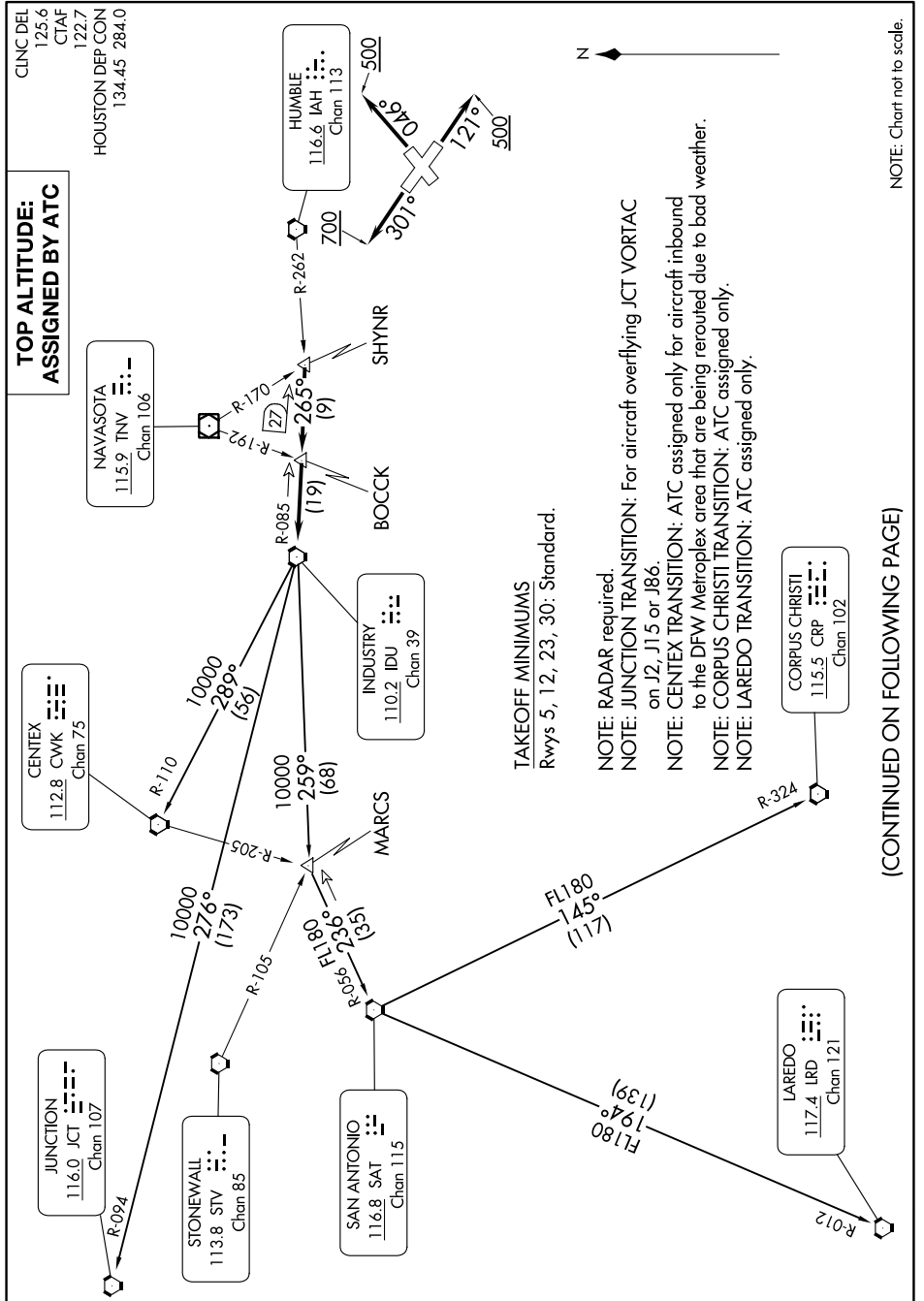


SC-5, 28 NOV 2024 to 26 DEC 2024



**TOP ALTITUDE:  
ASSIGNED BY ATC**

**TAKEOFF MINIMUMS**  
Rwys 5, 12, 23, 30: Standard.

**NOTE: RADAR required.**  
**NOTE: JUNCTION TRANSITION:** For aircraft overflying JCT VORTAC on J2, J15 or J86.  
**NOTE: CENTEX TRANSITION:** ATC assigned only for aircraft inbound to the DFW Metroplex area that are being rerouted due to bad weather.  
**NOTE: CORPUS CHRISTI TRANSITION:** ATC assigned only.  
**NOTE: LAREDO TRANSITION:** ATC assigned only.

**NOTE: RADAR required.**  
**NOTE: JUNCTION TRANSITION:** For aircraft overflying JCT VORTAC on J2, J15 or J86.  
**NOTE: CENTEX TRANSITION:** ATC assigned only for aircraft inbound to the DFW Metroplex area that are being rerouted due to bad weather.  
**NOTE: CORPUS CHRISTI TRANSITION:** ATC assigned only.  
**NOTE: LAREDO TRANSITION:** ATC assigned only.

NOTE: Chart not to scale.

(CONTINUED ON FOLLOWING PAGE)

SC-5, 28 NOV 2024 to 26 DEC 2024