

WAAS CH 50519 W22A	APP CRS 220°	Rwy Idg TDZE Apt Elev	4500 1990 1999
--	------------------------	-----------------------------	---

RNAV (GPS) RWY 22

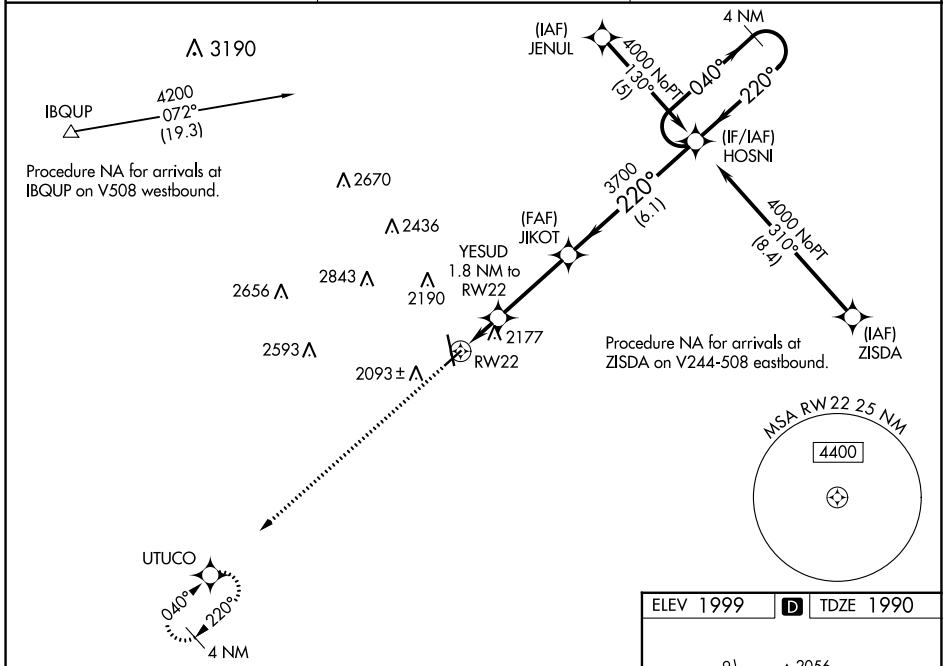
HAYS RGNL (HYS)

RNP APCH-GPS.

▼ For uncompensated Baro-VNAV systems, LNAV/VNAV NA below -18°C or above 45°C.
 ▲ Rwy 22 helicopter visibility reduction below ¼ SM NA. When local altimeter setting not received, use Russell altimeter setting: increase LPV DA to 2309 feet and visibility all Cats ¼ SM; increase LNAV/VNAV DA to 2545 feet and visibility all Cats ¼ SM; increase all MDA 80 feet and visibility LNAV and Circling Cat C and D ¼ SM. Circling NA for Cat D northwest of Rwy 4 and west of Rwy 16. VDP and Baro-VNAV NA when using Russell altimeter setting.

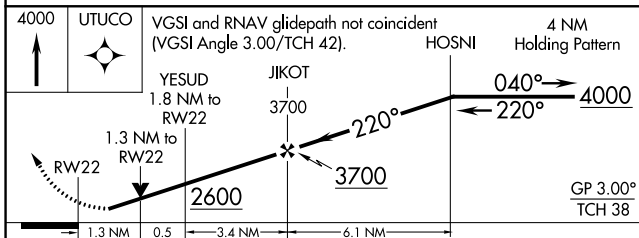
MISSED APPROACH:
Climb to 4000 direct UTUCO and hold.

AWOS-3PT 125,525	KANSAS CITY CENTER 124.4 322.4	UNICOM 122.8 (CTAF) 1
----------------------------	--	---------------------------------

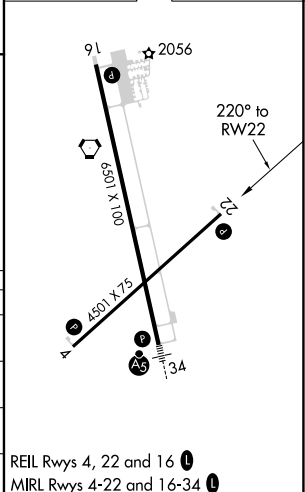


NC-2, 28 NOV 2024 to 26 DEC 2024

NC-2, 28 NOV 2024 to 26 DEC 2024



ELEV 1999	D TDZE 1990
-----------	--------------------



CATEGORY	A	B	C	D
LPV DA	2240-1 250 (300-1)			
LNAV/VNAV DA	2476-1¾ 486 (500-1¾)			
LNAV MDA	2440-1 450 (500-1)	2440-1¼ 450 (500-1¼)	2440-1½ 450 (500-1½)	
CIRCLING	2480-1 481 (500-1)	2560-1½ 561 (600-1½)	2680-2¼ 681 (700-2¼)	

REIL Rws 4, 22 and 16 1
MRL Rws 4-22 and 16-34 1