

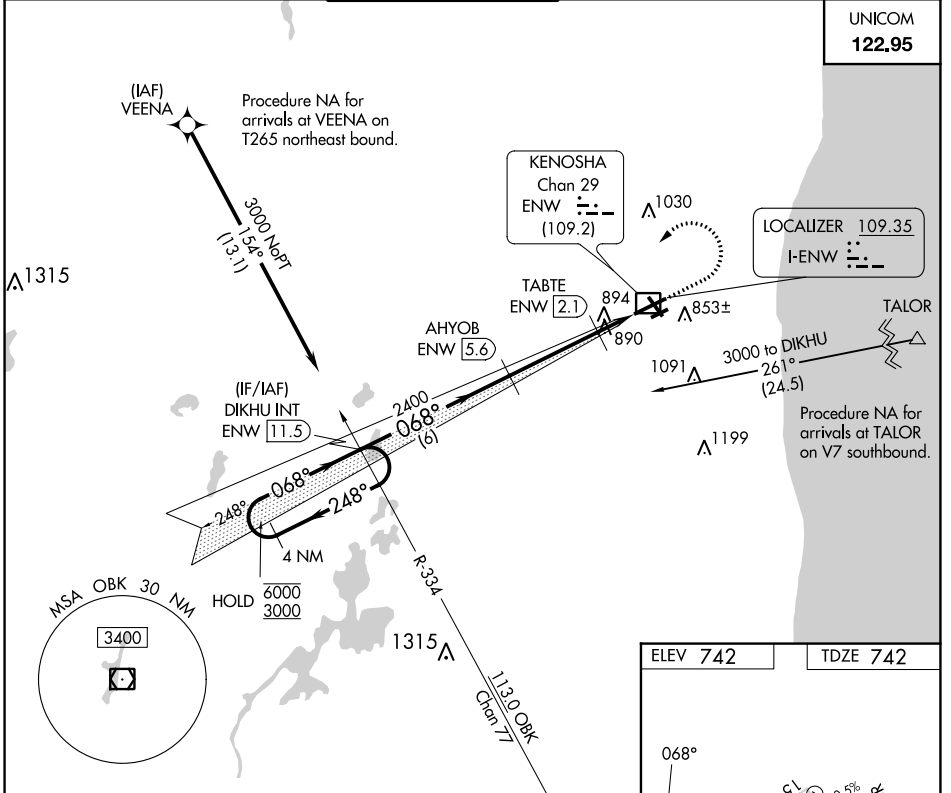
LOC I-ENW 109.35	APP CRS 068°	Rwy Idg 6600
		TDZE 742
		Apt Elev 742

ILS or LOC RWY 7L

KENOSHA RGNL (ENW)

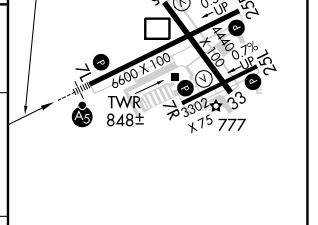
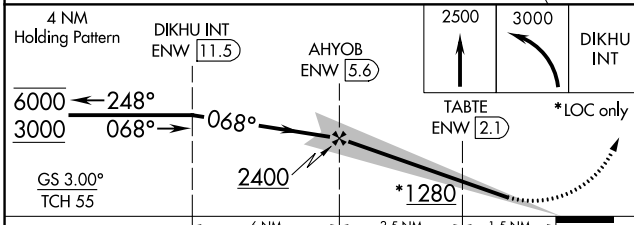
DME required for LOC only. RNAV 1-GPS required.		MALSR	MISSED APPROACH: Climb to 2500 then climbing left turn to 3000 direct DIKHU and hold.
Circling Rwy 7R, 15 NA at night.			

ATIS 127.175	MILWAUKEE APP CON 135.875 317.725	KENOSHA TOWER * 118.6 (CTAF) 0 353.6	GND CON 121.875	CLNC DEL 121.875	CLNC DEL 118.6 (When twr closed)
------------------------	---	--	---------------------------	----------------------------	---



EC-3, 28 NOV 2024 to 26 DEC 2024

EC-3, 28 NOV 2024 to 26 DEC 2024



CATEGORY	A	B	C	D
S-ILS 7L	942-1/2 200 (200-1/2)			
S-LOC 7L	1140-1/2	398 (400-1/2)	1140-3/4	398 (400-3/4)
CIRCLING	1200-1 458 (500-1)	1340-1 598 (600-1)	1400-1 3/4 658 (700-1 3/4)	1440-2 1/4 698 (700-2 1/4)

ELEV 742	TDZE 742
MIRL Rwy 7R-25L HIRL Rwy 7L-25R and 15-33 REIL Rwy 25R	
FAF to MAP 5 NM	
Knots	60 90 120 150 180
Min:Sec	5:00 3:20 2:30 2:00 1:40