

WAAS CH 50314 W07A	APP CRS 066°	Rwy Idg 6600 TDZE 742 Apt Elev 742
--	------------------------	---

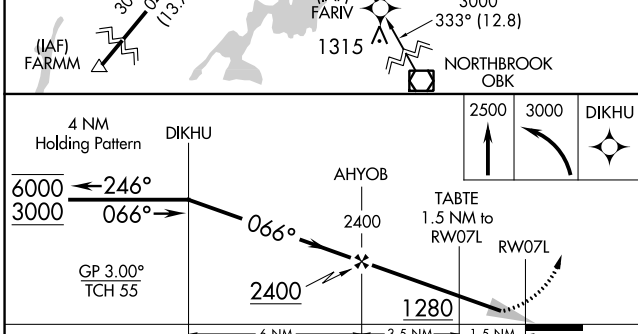
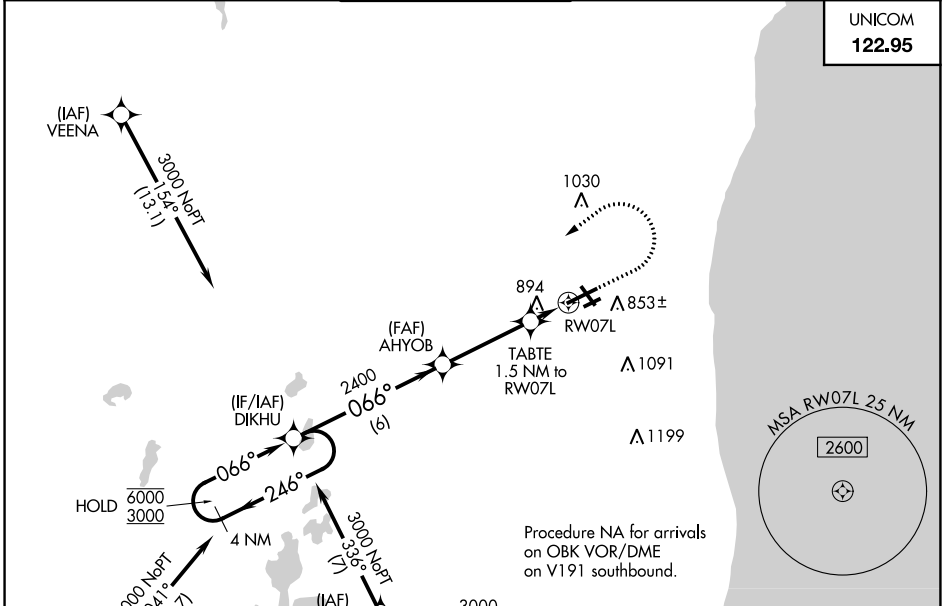
RNAV (GPS) RWY 7L

KENOSHA RGNL (E,N,W)

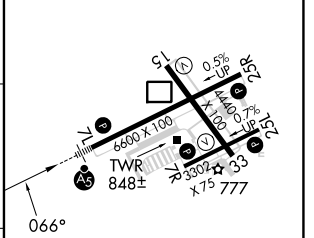
RNP APCH - GPS.	MALSR	MISSED APPROACH: Climb to 2500 then climbing left turn to 3000 direct DIKHU and hold.
<p>▼ Circling Rwy 7R, 1.5 NA at night. For uncompensated Baro-VNAV systems, LNAV/VNAV NA below -19°C or above 54°C. For inop ALS, increase LNAV Cat C/D visibility to 1½ SM.</p>		

ATIS 127.175	MILWAUKEE APP CON 135.875 317.725	KENOSHA TOWER ★ 118.6 (CTAF) 0 353.6	GND CON 121.875	CLNC DEL 121.875	CLNC DEL 118.6 (When twr closed)
------------------------	---	--	---------------------------	----------------------------	---

UNICOM
122.95



ELEV 742	TDZE 742
----------	----------



CATEGORY	A	B	C	D
LPV DA		942-½	200 (200-½)	
LNAV/VNAV DA		1181-¾	439 (500-¾)	
LNAV MDA	1160-½	418 (500-½)	1160-¾	418 (500-¾)
C CIRCLING	1200-1 458 (500-1)	1340-1 598 (600-1)	1400-1¾ 658 (700-1¾)	1440-2¼ 698 (700-2¼)

MIRL Rwy 7R-25L **1**
HIRL Rwy 7L-25R and 15-33 **1**
REIL Rwy 25R **1**

EC-3, 28 NOV 2024 to 26 DEC 2024

EC-3, 28 NOV 2024 to 26 DEC 2024