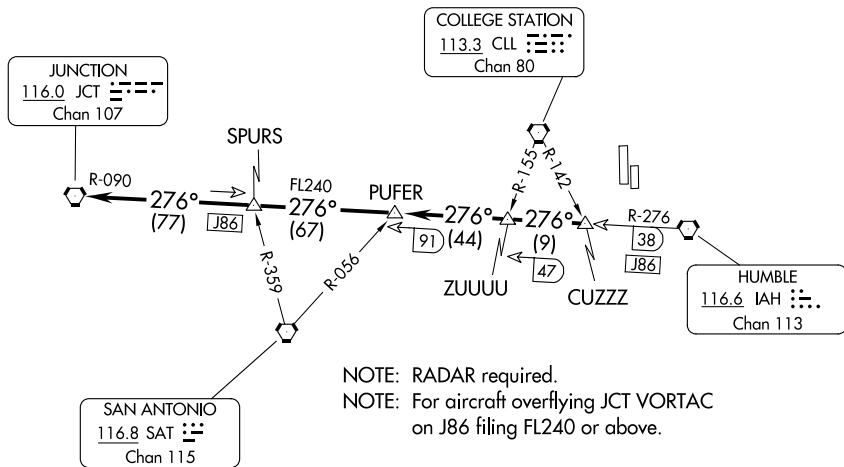


JUNCTION ONE DEPARTURE

ATIS
 128.375
 CLNC DEL
 119.45
 HOUSTON DEP CON
 123.8 257.7 (Rwys 17L/R)
 119.7 281.4 (Rwys 35L/R)
 GND CON
 121.8 239.0
 HOOKS TOWER ★
 127.4 354.1 (EAST)
 118.4 (CTAF) 354.1 (WEST)

TOP ALTITUDE:
ASSIGNED BY ATC



NOTE: RADAR required.
 NOTE: For aircraft overflying JCT VORTAC
 on J86 filing FL240 or above.

TAKEOFF MINIMUMS
 Rwys 17R, 35L: Standard.
 Rwys 17L, 35R: NA - Environmental.
 Waterway 17, 35: NA - Air Traffic.

NOTE: Chart not to scale.

DEPARTURE ROUTE DESCRIPTION

TAKEOFF ALL RUNWAYS: When entering controlled airspace, climb on assigned heading for RADAR vectors to CUZZZ INT. Maintain ATC assigned altitude. Expect filed altitude 10 minutes after departure, thence. . . .

. . . .on IAH R-276 and JCT R-090 to JCT VORTAC.

JUNCTION ONE DEPARTURE

SC-5, 28 NOV 2024 to 26 DEC 2024

SC-5, 28 NOV 2024 to 26 DEC 2024