

LOC/DME I-HEW 110.5 Chan 42	APP CRS 168°	Rwy Idg TDZE Apt Elev	6002 152 152
---	------------------------	-----------------------------	---

LOC RWY 17R

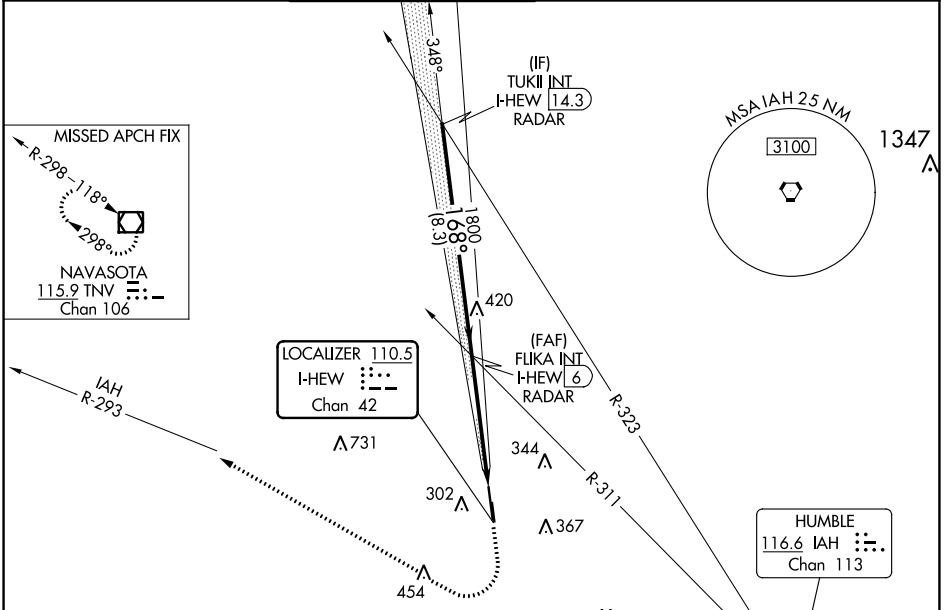
DAVID WAYNE HOOKS MEML (DWH)

RADAR required for procedure entry.

When local altimeter setting not received, use George Bush Intcnl/Houston altimeter setting and increase all MDA 40 feet; increase S-LOC 17R Cts C/D visibility 1/8 mile. Circling NA to Rwys 17W and 35W. Rwy 17R helicopter visibility reduction below 3/4 SM NA. Circling Rwy 35R NA at night.

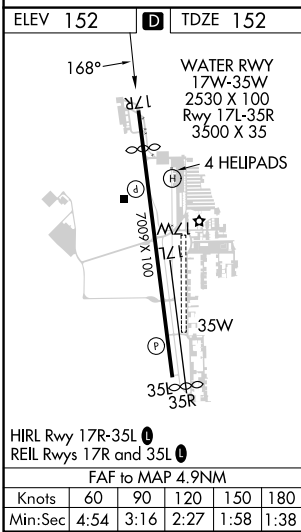
MISSED APPROACH: Climb to 1200 then climbing right turn to 2000 on heading 325° and IAH VORTAC R-293 to TNV VOR/DME and hold.

ATIS 128.375	HOUSTON APP CON 119.7 281.4	HOOKS TOWER* 127.4 354.1 EAST 118.4 (CTAF) 354.1 WEST	GND CON 121.8 239.0	CLNC DEL 119.45	UNICOM 122.95
------------------------	---------------------------------------	---	-------------------------------	---------------------------	-------------------------



SC-5, 28 NOV 2024 to 26 DEC 2024

SC-5, 28 NOV 2024 to 26 DEC 2024



ELEV 152	D	TDZE 152												
<p>WATER RWY 17W-35W 2530 X 100 Rwy 17L-35R 3500 X 35</p> <p>4 HELIPADS</p> <p>HIRL Rwy 17R-35L REIL Rwys 17R and 35L</p> <p>FAF to MAP 4.9NM</p> <table border="1"> <tr> <td>Knots</td> <td>60</td> <td>90</td> <td>120</td> <td>150</td> <td>180</td> </tr> <tr> <td>Min:Sec</td> <td>4:54</td> <td>3:16</td> <td>2:27</td> <td>1:58</td> <td>1:38</td> </tr> </table>			Knots	60	90	120	150	180	Min:Sec	4:54	3:16	2:27	1:58	1:38
Knots	60	90	120	150	180									
Min:Sec	4:54	3:16	2:27	1:58	1:38									
<p>Visual Segment - Obstacles.</p> <table border="1"> <tr> <td>1200</td> <td>2000</td> <td>IAH R-293</td> <td>TNV</td> </tr> <tr> <td>↑</td> <td>hdg 325°</td> <td>☐</td> <td>☐</td> </tr> </table> <p>2000 → 168° → 1800 → I-HEW 1.1</p> <p>8.3 NM 4.9 NM</p>			1200	2000	IAH R-293	TNV	↑	hdg 325°	☐	☐				
1200	2000	IAH R-293	TNV											
↑	hdg 325°	☐	☐											
CATEGORY	A	B	C	D										
S-LOC 17R	640-1	488 (500-1)	640-1 3/8	488 (500-1 3/8)										
C CIRCLING	640-1 488 (500-1)	660-1 508 (600-1)	680-1 1/2 528 (600-1 1/2)	780-2 628 (700-2)										