

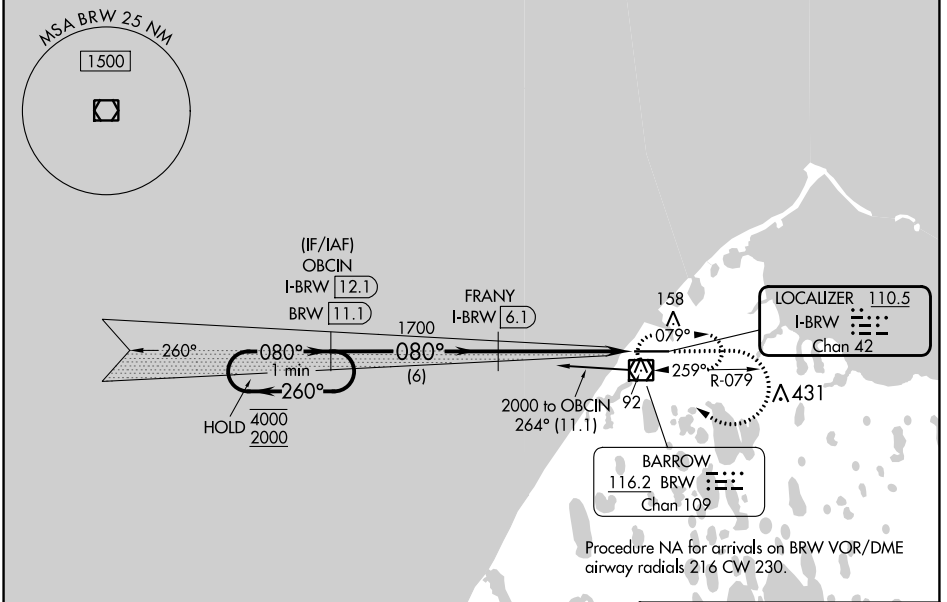
LOC/DME I-BRW 110.5 Chan 42	APP CRS 080°	Rwy Idg 5900 TDZE 49 Apt Elev 49
---	------------------------	---

ILS or LOC RWY 8

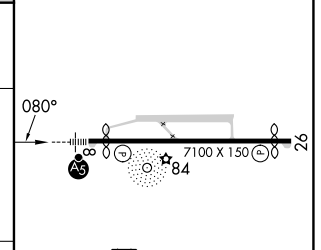
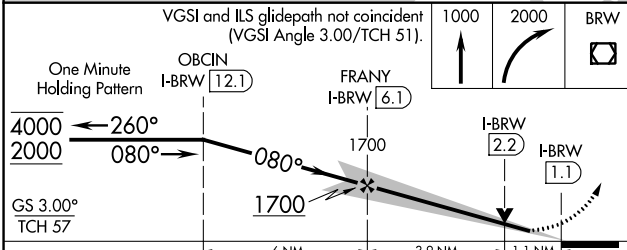
WILEY POST-WILL ROGERS MEML (BRW)(PABR)

DME required.	MALSR	MISSED APPROACH: Climb to 1000 then climbing right turn to 2000 direct BRW VOR/DME and hold, continue climb-in-hold to 2000.
<p>Autopilot coupled approach NA below 290. Circling NA for Cat A north of Rwy 8-26. For inop ALS, increase S-LOC 8 Cat C/D visibility to RVR 6000.</p> <p>*RVR 1800 authorized with use of FD or AP or HUD to DA.</p>		

AFIS 132.15	ANCHORAGE CENTER 135.3 239.25	BARROW RADIO 123.6 (CTAF) 0
-----------------------	---	---------------------------------------



ELEV 49	D	TDZE 49
---------	----------	---------



CATEGORY	A	B	C	D
S-ILS 8*	249/24		200 (200-½)	
S-LOC 8	460/24	411 (500-½)	460/40	411 (500-¾)
C CIRCLING	460-1 411 (500-1)	500-1 451 (500-1)	500-1½ 451 (500-1½)	680-2 631 (700-2)

REIL Rwy 26 0
HIRL Rwy 8-26 0

ILS or LOC RWY 8

AK, 31 OCT 2024 to 26 DEC 2024

AK, 31 OCT 2024 to 26 DEC 2024