

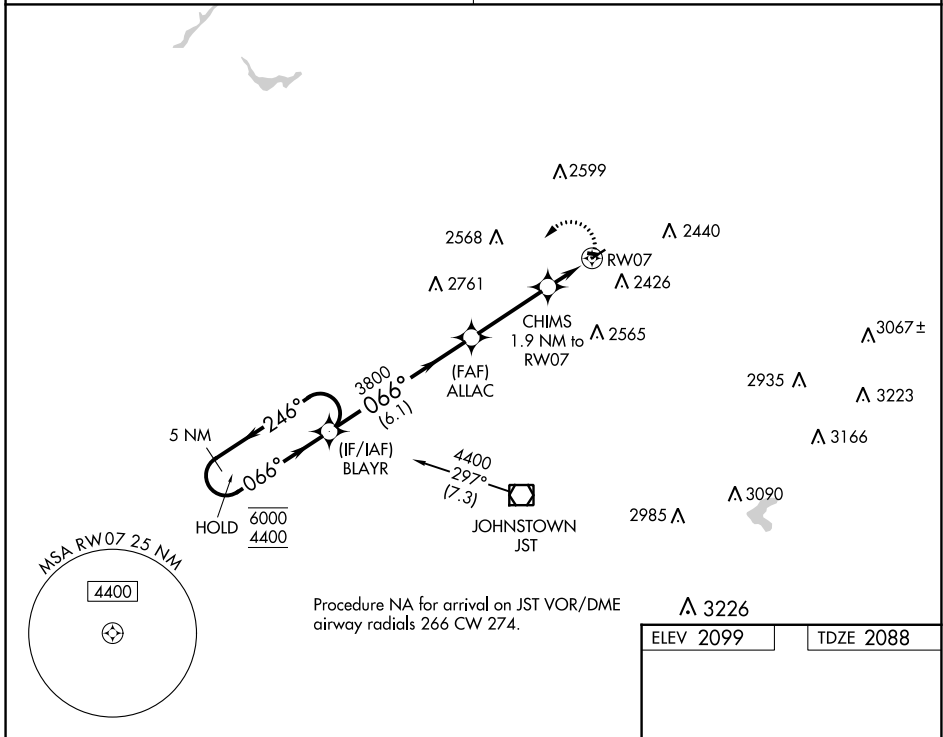
APP CRS	Rwy Idg	3204
066°	TDZE	2088
	Apt Elev	2099

RNAV (GPS) RWY 7

EBENSBURG (9G8)

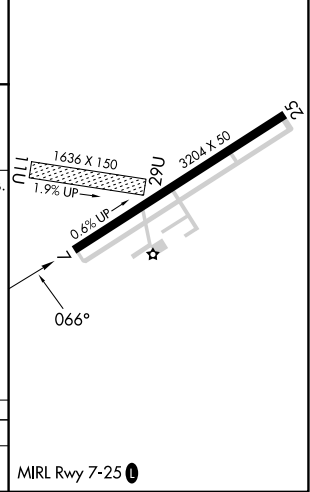
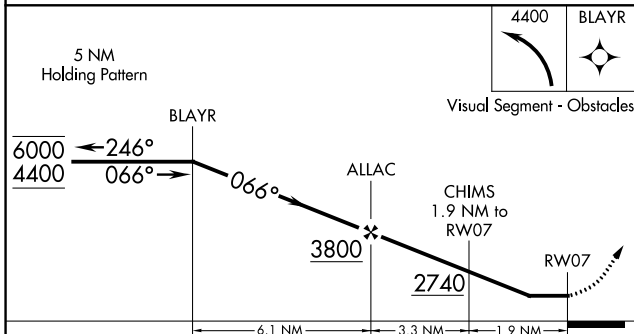
RNP APCH - GPS.	<p>⚠ Procedure NA at night. Rwy 7 helicopter visibility reduction below 1 SM NA. Obtain local altimeter setting on CTAF; when not received, use Johnstown altimeter setting and increase all MDAs 60 feet and visibility Cat C ¼ SM.</p>	<p>MISSED APPROACH: Climbing left turn to 4400 direct BLAYR and hold.</p>
-----------------	---	---

JOHNSTOWN APP CON ★	UNICOM
121.2 299.2	122.8 (CTAF) 0



Procedure NA for arrival on JST VOR/DME airway radials 266 CW 274.

ELEV 2099	TDZE 2088
-----------	-----------



CATEGORY	A	B	C	D
LNAV MDA	2600-1	512 (600-1)	2600-1½ 512 (600-1½)	NA

NE-4, 28 NOV 2024 to 26 DEC 2024

NE-4, 28 NOV 2024 to 26 DEC 2024