

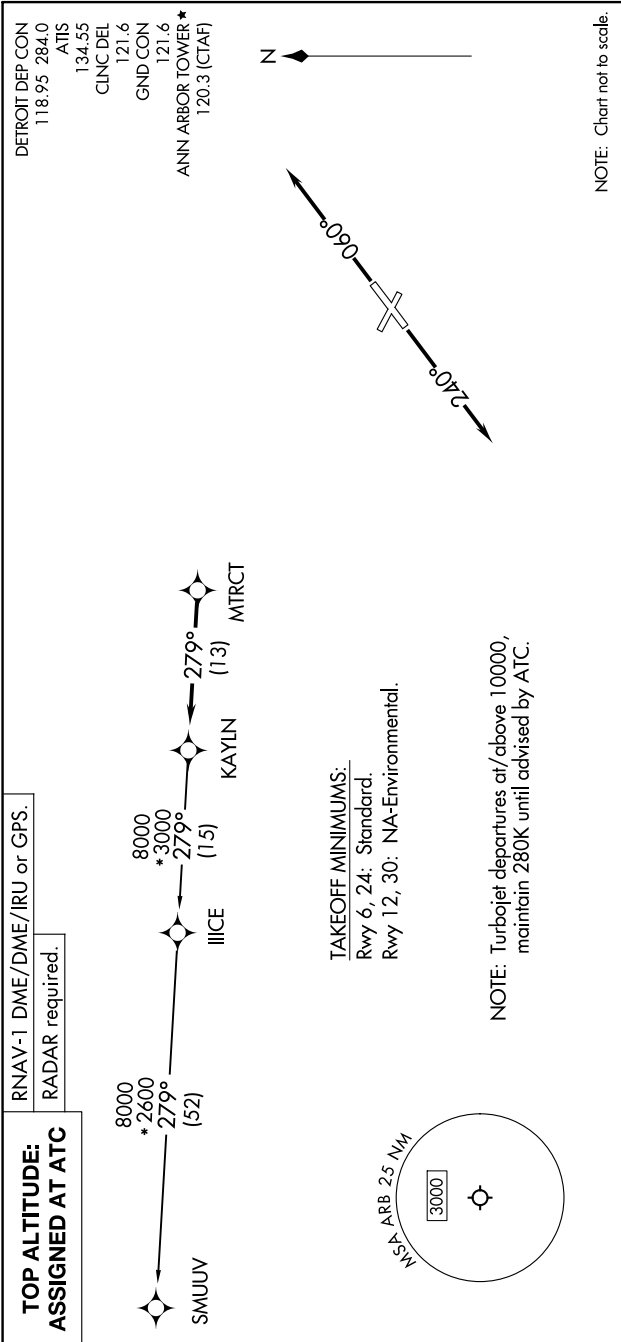
(KAYLN3.KAYLN) 24137

# KAYLN THREE DEPARTURE (RNAV) AL-5506 (FAA)

ANN ARBOR MUNI (ARB)

ANN ARBOR, MICHIGAN

EC-1, 28 NOV 2024 to 26 DEC 2024



## DEPARTURE ROUTE DESCRIPTION

**TAKEOFF RUNWAY 6:** Climb on heading 060° or as assigned by ATC, thence....  
**TAKEOFF RUNWAY 24:** Climb on heading 240° or as assigned by ATC, thence....  
 ....for RADAR vectors to MTRCT, then on track 279° to KAYLN, then on (transition). Maintain ATC assigned altitude, expect filed altitude 10 minutes after departure.

**SMUUV TRANSITION (KAYLN3.SMUUV):**

# KAYLN THREE DEPARTURE (RNAV)

(KAYLN3.KAYLN) 16MAY24

ANN ARBOR, MICHIGAN

ANN ARBOR MUNI (ARB)

EC-1, 28 NOV 2024 to 26 DEC 2024