

(ZETTR4.ZETTR) 24137

ZETTR FOUR DEPARTURE (RNAV)

AL-5506 (FAA)

ANN ARBOR MUNI (ARB)

ANN ARBOR, MICHIGAN

DETROIT DEP CON

118.95 284.0

ATIS

134.55

CLNC DEL

121.6

GND CON

121.6

ANN ARBOR TOWER *

120.3 (CTAF)

RNAV 1 - DME/DME/IRU or GPS.

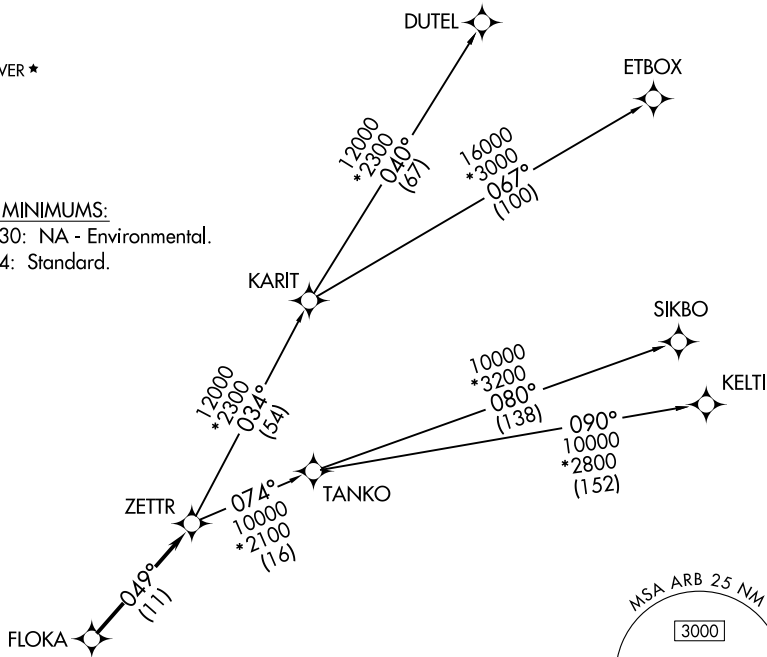
RADAR required.

**TOP ALTITUDE:
ASSIGNED BY ATC**

TAKEOFF MINIMUMS:

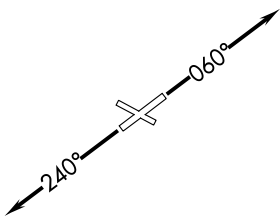
Rwys 12, 30: NA - Environmental.

Rwys 6, 24: Standard.



EC-1, 28 NOV 2024 to 26 DEC 2024

EC-1, 28 NOV 2024 to 26 DEC 2024



NOTE: Turbojet departures at/above 10000, maintain 280K until advised by ATC.

NOTE: TANKO Transition: For use by CYYZ area arrivals only, or as assigned by ATC.

NOTE: Chart not to scale.

▼ DEPARTURE ROUTE DESCRIPTION

TAKEOFF RUNWAY 6: Climb on heading 060° or as assigned by ATC, then....

TAKEOFF RUNWAY 24: Climb on heading 240° or as assigned by ATC, then....

....for RADAR vectors to FLOKA, then on track 049° to ZETTR, then on (transition). Maintain ATC assigned altitude, expect filed altitude 10 minutes after departure.

DUTEL TRANSITION (ZETTR4.DUTEL):

ETBOX TRANSITION (ZETTR4.ETBOX):

KELTI TRANSITION (ZETTR4.KELTI):

SIKBO TRANSITION (ZETTR4.SIKBO):

TANKO TRANSITION (ZETTR4.TANKO):

ZETTR FOUR DEPARTURE (RNAV)

(ZETTR4.ZETTR) 16MAY24

ANN ARBOR, MICHIGAN
ANN ARBOR MUNI (ARB)