

| | | | |
|--|------------------------|-----------------------------|---|
| WAAS CH 82237 W18A | APP CRS 176° | Rwy Idg TDZE Apt Elev | 5001 1477 1477 |
|--|------------------------|-----------------------------|---|

RNAV (GPS) RWY 18

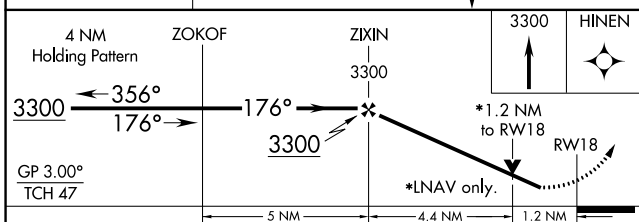
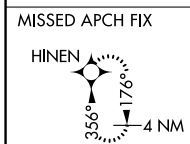
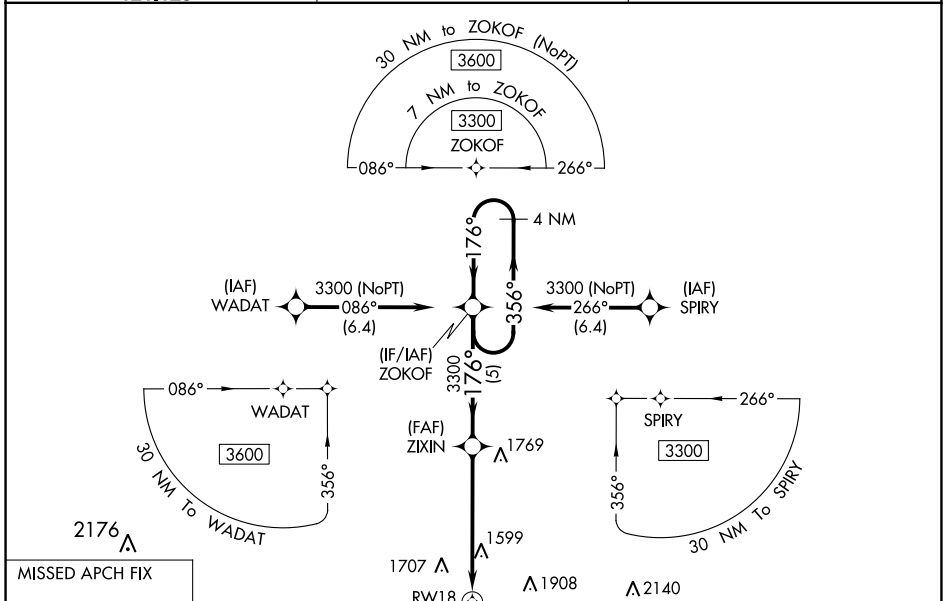
ALVA RGNL (AVK)

RNP APCH-GPS

For uncompensated Baro-VNAV systems, LNAV/VNAV NA below -17°C (2°F) or above 54°C (130°F). When local altimeter setting not received, use Vance AFB altimeter setting and increase all DA 127 feet and all MDA 140 feet; increase LPV all Cats and LNAV Cat C visibility 3/8 mile, LNAV/VNAV all Cats and Circling Cat C visibility 1/2 mile. Baro-VNAV and VDP NA when using Vance AFB altimeter setting. Helicopter visibility reduction below 3/4 SM NA. Circling to Rwy 9/27 NA.

ODALS MISSED APPROACH: Climb to 3300 direct HINEN and hold.

| | | |
|----------------------------|---|---------------------------------|
| AWOS-3PT 121.125 | VANCE APP CON* 126.75 346.325 | UNICOM 122.8 (CTAF) 0 |
|----------------------------|---|---------------------------------|



| CATEGORY | A | B | C | D |
|--------------|-----------------------|-----------------------|-------------------------------|----|
| LPV DA | 1738-7/8 | 261 (300-7/8) | | NA |
| LNAV/VNAV DA | 1748-7/8 | 271 (300-7/8) | | NA |
| LNAV MDA | 1900-1 | 423 (500-1) | 1900-1 1/4 423 (500-1 1/4) | NA |
| CIRCLING | 1980-1 503 (600-1) | 2120-1 643 (700-1) | 2220-2 1/4 743 (800-2 1/4) | NA |

