

|                           |                        |   |
|---------------------------|------------------------|---|
| LOC I-UCY<br><b>109.7</b> | APP CRS<br><b>006°</b> | Rwy Idg <b>6503</b><br>TDZE <b>346</b><br>Apt Elev <b>346</b> |
|---------------------------|------------------------|---|

# ILS or LOC RWY 1

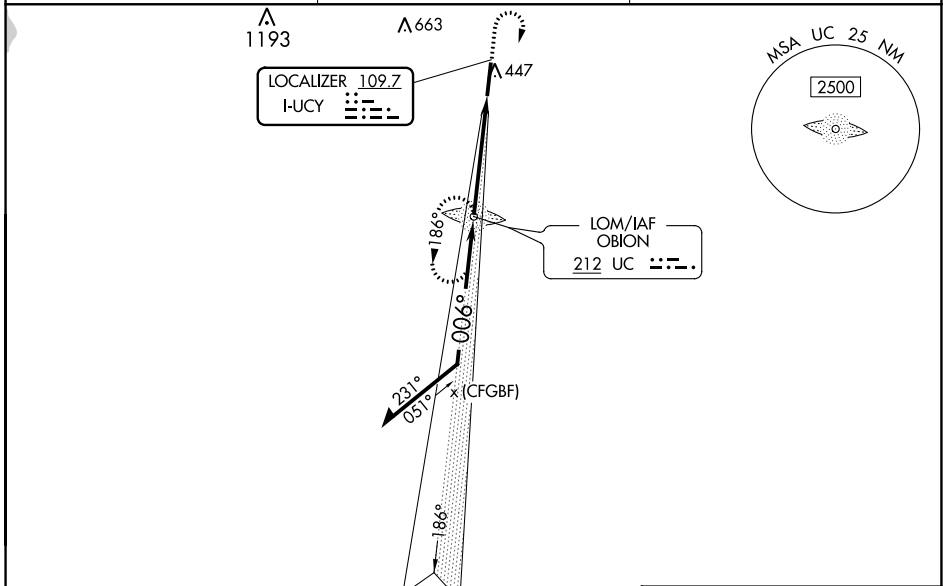
EVERETT-STEWART RGNL (UCY)

**ADF required.** When local altimeter setting not received, use Dyersburg altimeter setting and increase all DA 72 feet and all MDA 80 feet, increase S-LOC 1 Cat C/D visibility to 1 3/4 mile, Circling Cat C visibility to 1 3/4 mile and Circling Cat D visibility to 2 1/2 mile. Inop table does not apply to S-ILS 1. For inop ODALS, increase S-LOC 1 Cat C/D visibility to 1 3/4 mile. For inop ODALS when using Dyersburg altimeter setting, increase S-ILS 1 all Cats visibility to 3/4 mile and S-LOC 1 Cat D visibility to 1 3/4 mile.

**ODALS**

**MISSED APPROACH:**  
Climb to 1300 then climbing right turn to 2500 direct OBION LOM and hold.

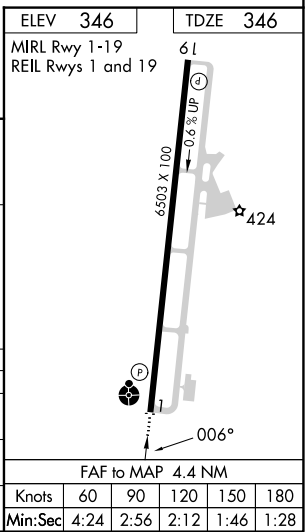
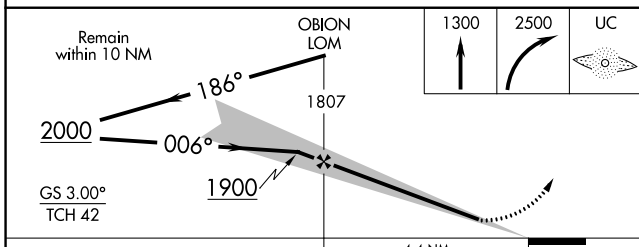
|                          |  |                               |
|--------------------------|--|-------------------------------|
| AWOS-3<br><b>135,325</b> | MEMPHIS CENTER<br><b>133.65 292.15</b> | UNICOM<br><b>122.7 (CTAF)</b> |
|--------------------------|--|-------------------------------|



SE-1, 28 NOV 2024 to 26 DEC 2024

SE-1, 28 NOV 2024 to 26 DEC 2024

## ADF and RADAR REQUIRED



| CATEGORY          | A                     | B             | C         | D   |
|-------------------|-----------------------|---------------|-----------|---|
| S-ILS 1           | 546-3/4 200 (200-3/4) |               |           |   |
| S-LOC 1           | 820-3/4               | 474 (500-3/4) | 820-1 1/4 | 474 (500-1 1/4)                               |
| <b>C</b> CIRCLING | 820-1                 | 474 (500-1)   | 820-1 1/2 | 1020-2 1/4<br>474 (500-1 1/2) 674 (700-2 1/4) |