

# BORRN SIX DEPARTURE (RNAV)

HOUSTON, TEXAS

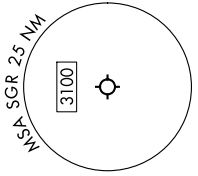
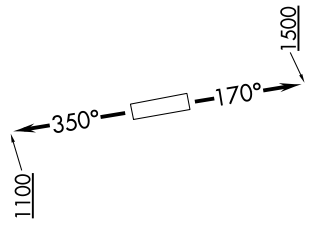
SC-5, 28 NOV 2024 to 26 DEC 2024

**TOP ALTITUDE:  
ASSIGNED BY ATC**

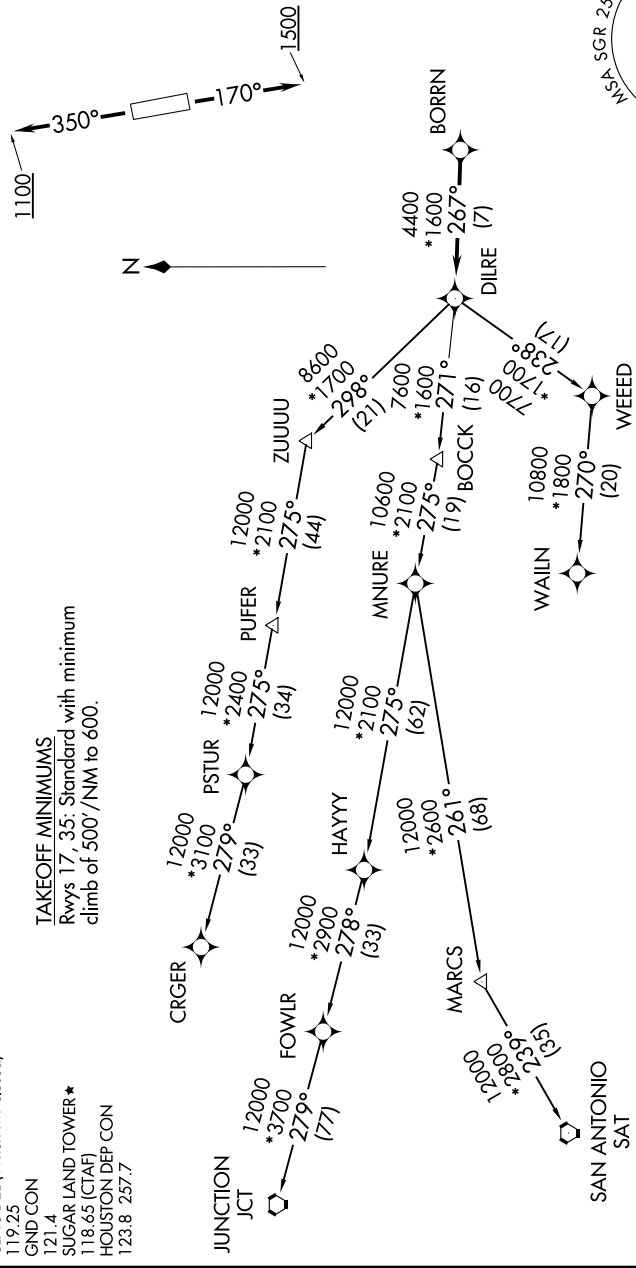
RNAV 1 - DME/DME/IRU or GPS.  
RADAR required.

ATIS \*  
118.125  
CLNC DEL  
121.4  
CLNC DEL (When twr closed)  
119.25  
GND CON  
121.4  
SUGAR LAND TOWER \*  
118.65 (CTAF)  
HOUSTON DEP CON  
123.8 257.7

**TAKEOFF MINIMUMS**  
Rwys 17, 35: Standard with minimum  
climb of 500'/NM to 600.



NOTE: Chart not to scale.



NOTE: CRGR-TRANSITION ATC assigned only  
for aircraft departing 54T, AXH, EFD, GLS,  
HPY, IWS, LBX, LVJ, SGR, TME, T00, T41.

(NARRATIVE ON FOLLOWING PAGE)

# BORRN SIX DEPARTURE (RNAV)

(BORRN6.BORRN) 30NOV23

HOUSTON, TEXAS

SUGAR LAND RGNL (SGR)

SC-5, 28 NOV 2024 to 26 DEC 2024