

LOC/DME I-TXH 110.7 Chan 44	APP CRS 350°	Rwy Idg 6016 TDZE 78 Apt Elev 82
---	------------------------	---

ILS or LOC RWY 35

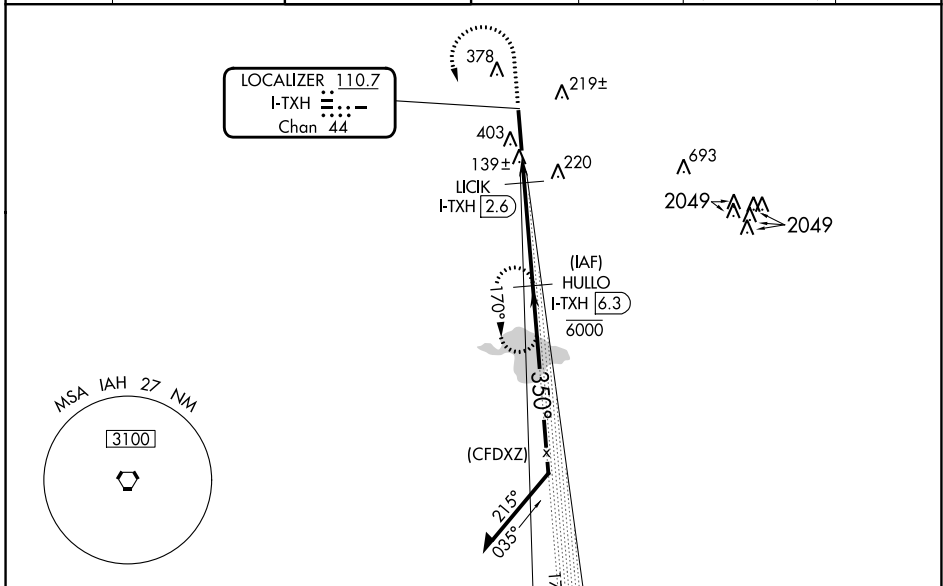
SUGAR LAND RGNL (SGR)

DME required.
RADAR required for procedure entry.

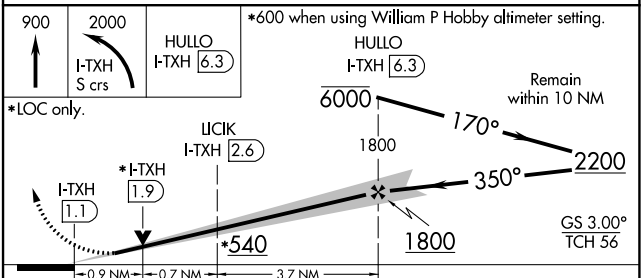
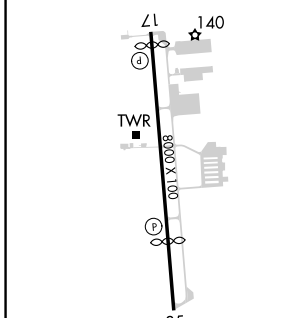
VDP NA when using William P Hobby altimeter setting. When local altimeter setting not received, use William P Hobby altimeter setting and increase all DA 51 feet and all MDA 60 feet and S-LOC 35 Cat C/D visibility 1/8 mile, and Circling Cat C/D visibility 1/4 mile.

MISSED APPROACH: Climb to 900 then climbing left turn to 2000 on I-TXH localizer south course to HULLO/I-TXH 6.3 DME and hold.

ATIS★ 118.125	HOUSTON APP CON 123.8 257.7	SUGAR LAND TOWER★ 118.65 (CTAF) 0	GND CON 121.4	CLNC DEL 121.4	CLNC DEL 119.25 (when twr closed)	UNICOM 122.95
-------------------------	---------------------------------------	--	-------------------------	--------------------------	--	-------------------------



ELEV 82	TDZE 78
---------	---------



CATEGORY	A	B	C	D
S-ILS 35		278-3/4	200 (200-3/4)	
S-LOC 35		400-1	322 (400-1)	
<input checked="" type="checkbox"/> CIRCLING	720-1	638 (700-1)	720-1 3/4 638 (700-1 3/4)	720-2 638 (700-2)

SC-5, 28 NOV 2024 to 26 DEC 2024

SC-5, 28 NOV 2024 to 26 DEC 2024