

# KARR SEVEN DEPARTURE (RNAV)

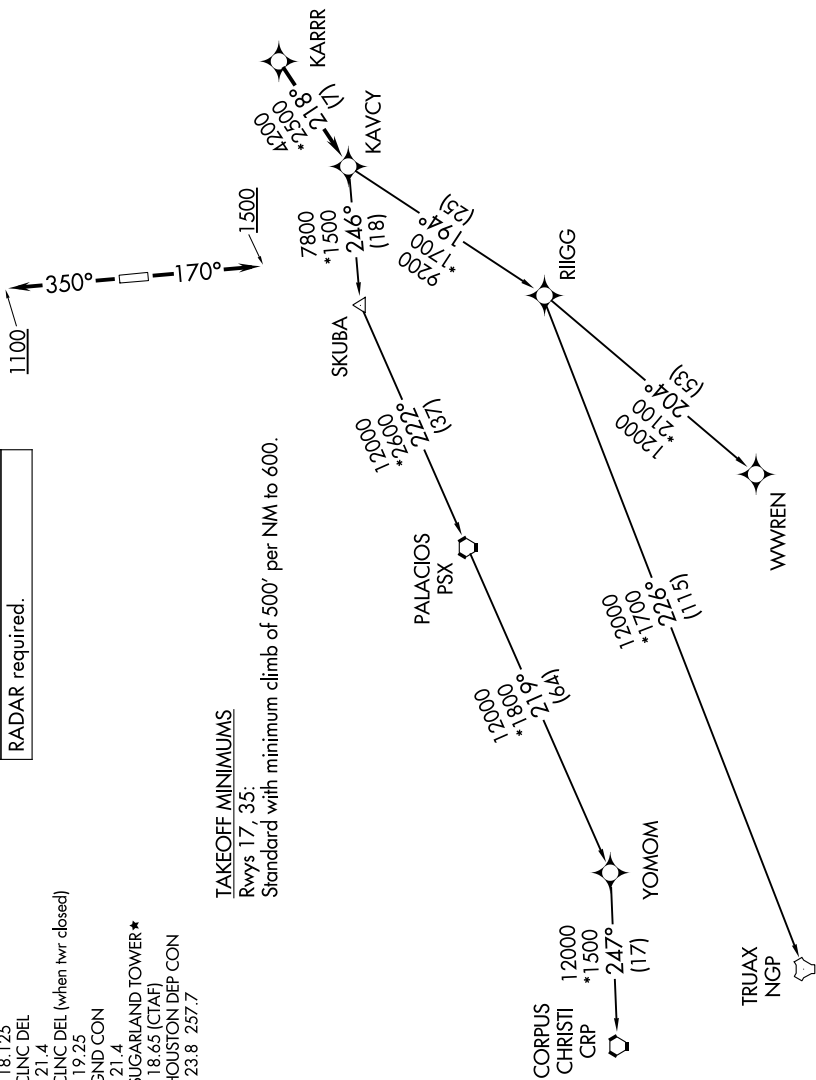
**TOP ALTITUDE:  
ASSIGNED BY ATC**

RNAV-1 DME/DME/IRU or GPS.  
RADAR required.

- ATIS \* 118.125
- CINC DEL 121.4
- CINC DEL (when hwr closed) 119.25
- GND CON 121.4
- SUGARLAND TOWER \* 118.65 (CTAF)
- HOUSTON DEP CON 123.8 257.7

### TAKEOFF MINIMUMS

Rwys 17, 35:  
Standard with minimum climb of 500' per NM to 600.



(NARRATIVE ON FOLLOWING PAGE)

NOTE: Chart not to scale.

# KARR SEVEN DEPARTURE (RNAV)