

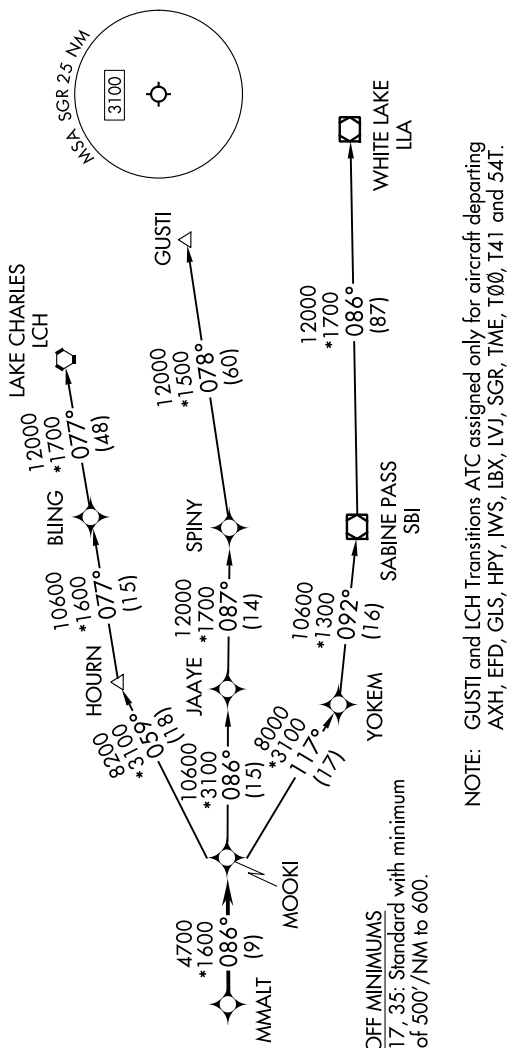
# MMALT SEVEN DEPARTURE (RNAV)

SC-5, 28 NOV 2024 to 26 DEC 2024

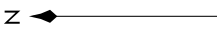
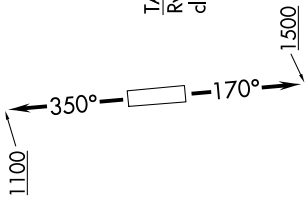
HOUSTON DEP CON  
123.8 257.7  
ATIS \*  
118.125  
CLNC DEL  
121.4  
CLNC DEL (When twr closed)  
119.25  
GND CON  
121.4  
SUGARLAND TOWER \*  
118.65 (CTAF)

RNAV 1 - DME/DME/IRU or GPS.  
RADAR required.

TOP ALTITUDE:  
ASSIGNED BY ATC



TAKEOFF MINIMUMS  
Rwys 17, 35: Standard with minimum  
climb of 500'/NM to 600'.



NOTE: Chart not to scale.

## DEPARTURE ROUTE DESCRIPTION

**TAKEOFF RUNWAY 17:** Climb on heading 170° to 1500, for RADAR vectors to MMALT, thence. . . . .  
**TAKEOFF RUNWAY 35:** Climb on heading 350° to 1100, for RADAR vectors to MMALT, thence. . . . .  
 . . . on track 086° to MOOKI, then on (transition). Maintain ATC assigned altitude.  
 Expect filed altitude 10 minutes after departure.

- GUSTI TRANSITION (MMALT7.GUSTI)
- LAKE CHARLES TRANSITION (MMALT7.LCH)
- WHITE LAKE TRANSITION (MMALT7.ILA)

NOTE: GUSTI and LCH Transitions ATC assigned only for aircraft departing AXH, EFD, GLS, HPY, IWS, LBX, LVJ, SGR, TME, T00, T41 and 54T.

SC-5, 28 NOV 2024 to 26 DEC 2024