

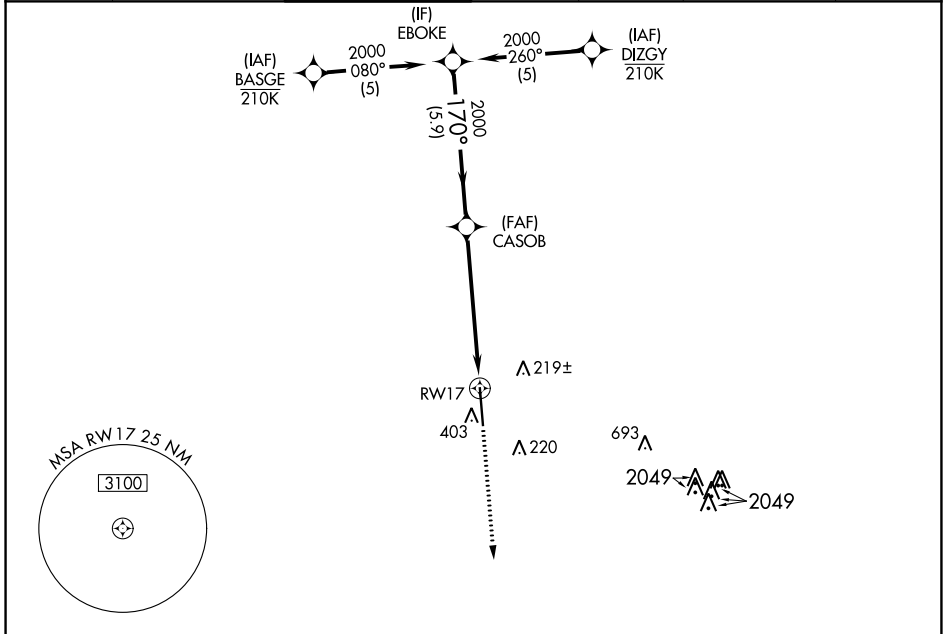
WAAS CH <b>82513</b> <b>W17A</b>	APP CRS <b>170°</b>	Rwy Idg TDZE Apt Elev	<b>7620</b> <b>81</b> <b>81</b>
--	------------------------	-----------------------------	---------------------------------------

# RNAV (GPS) RWY 17

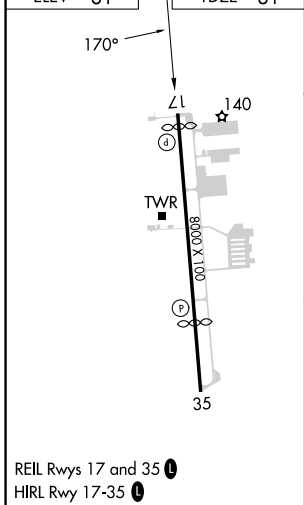
SUGAR LAND RGNL (SGR)

RNP APCH - GPS.	MISSED APPROACH: Climb to 2000 direct POPAM and hold.
<p><b>⚠</b> For uncompensated Baro-VNAV systems, LNAV/VNAV NA below -4°C or above 54°C. Rwy 17 helicopter visibility reduction below 3/4 SM NA.</p>	

ATIS★ <b>118.125</b>	HOUSTON APP CON <b>123.8 257.7</b>	SUGAR LAND TOWER★ <b>118.65 (CTAF) 0</b>	GND CON <b>121.4</b>	CLNC DEL <b>121.4</b>	CLNC DEL <b>119.25</b> (when twr closed)	UNICOM <b>122.95</b>
-------------------------	---------------------------------------	---	-------------------------	--------------------------	--	-------------------------



ELEV 81	TDZE 81
---------	---------



REIL Rwy 17 and 35  
HIRL Rwy 17-35

VGSI and RNAV glidepath not coincident (VGSI Angle 3.50/TCH 52).				2000	POPAM
EBOKE	CASOB	RWY 17		↑	⬠
2000	2000	1.4 NM to RWY 17			
5.9 NM		4.5 NM			
GP 3.00°	TCH 54				
CATEGORY	A	B	C	D	
LPV DA	398-1 317 (400-1)				
LNAV/VNAV DA	704-2 623 (700-2)				
LNAV MDA	640-1	559 (600-1)	640-1 5/8	559 (600-1 5/8)	
<input checked="" type="checkbox"/> CIRCLING	720-1	639 (700-1)	720-1 3/4	720-2	639 (700-2)

SC-5, 28 NOV 2024 to 26 DEC 2024

SC-5, 28 NOV 2024 to 26 DEC 2024