

WAAS CH 56219 W35A	APP CRS 350°	Rwy Idg TDZE 78 Apt Elev 82	6016
--	------------------------	---	-------------

RNAV (GPS) RWY 35

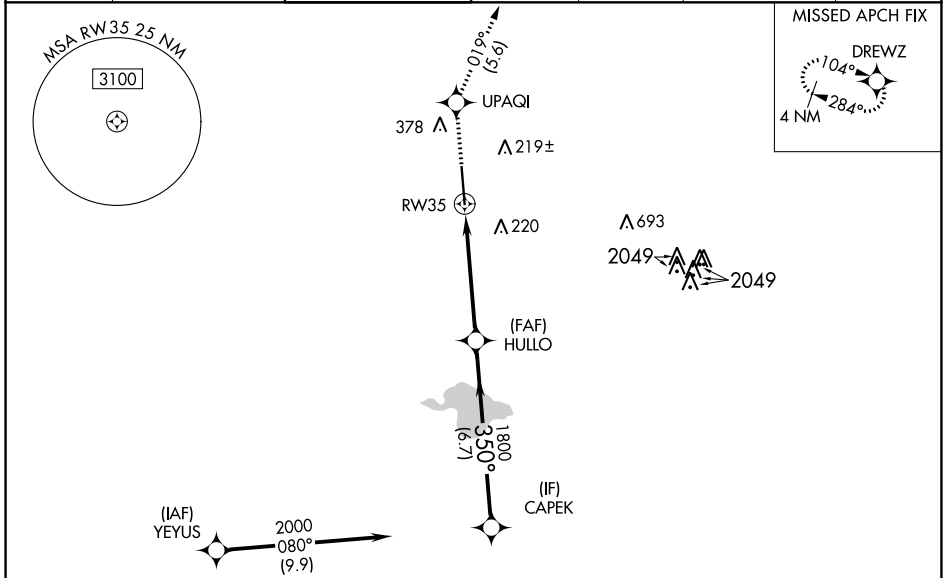
SUGAR LAND RGNL (SGR)

RNP APCH.

⚠ For uncompensated Baro-VNAV systems, LNAV/VNAV NA below -15°C (5°F) or above 43°C (109°F).
⚠ Baro-VNAV and VDP NA when using William P Hobby altimeter setting. When local altimeter setting not received, use William P Hobby altimeter setting: increase all DA 51 feet; increase all MDA 60 feet and increase LNAV-VNAV all Cats visibility to 1¼, LNAV Cat C/D visibility to 1⅞, and Circling Cat C visibility to 2, Cat D to 2¼. When VGSI inop., Circling Rwy 17 NA at night.

MISSED APPROACH: Climb to 2000 direct UPAQI and on track 019° to DREWZ and hold.

ATIS* 118.125	HOUSTON APP CON 123.8 257.7	SUGAR LAND TOWER* 118.65 (CTAF) 0	GND CON 121.4	CLNC DEL 121.4	CLNC DEL 119.25 (when twr closed)	UNICOM 122.95
--------------------------------	--	--	--------------------------------	---------------------------------	---	--------------------------------



ELEV 82	TDZE 78
---------	---------

RADAR REQUIRED

2000	UPAQI	tr 019°	DREWZ
------	-------	---------	-------

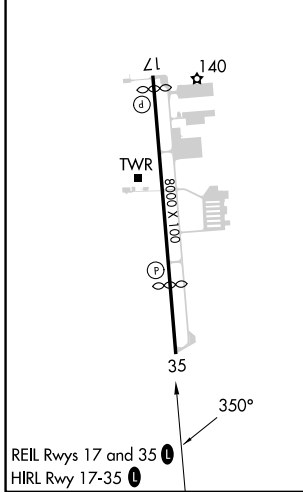
* LNAV only.

* 1.7 NM to RW35

CAPEK 2000
HULLO 1800
RW35 3500
GP 3.00°
TCH 56

1.7	3.5 NM	6.7 NM	
-----	--------	--------	--

CATEGORY	A	B	C	D
LPV DA		278-¾	200 (200-¾)	
LNAV/VNAV DA		567-1⅝	489 (500-1⅞)	
LNAV MDA	660-1	582 (600-1)	660-1¾	582 (600-1¾)
C CIRCLING	720-1	638 (700-1)	720-1¾ 638 (700-1¾)	720-2 638 (700-2)



SC-5, 28 NOV 2024 to 26 DEC 2024

SC-5, 28 NOV 2024 to 26 DEC 2024