

LOM RU <b>275</b>	APP CRS <b>202°</b>	Rwy Idg TDZE Apt Elev	<b>5501</b> <b>772</b> <b>772</b>
----------------------	------------------------	-----------------------------	---

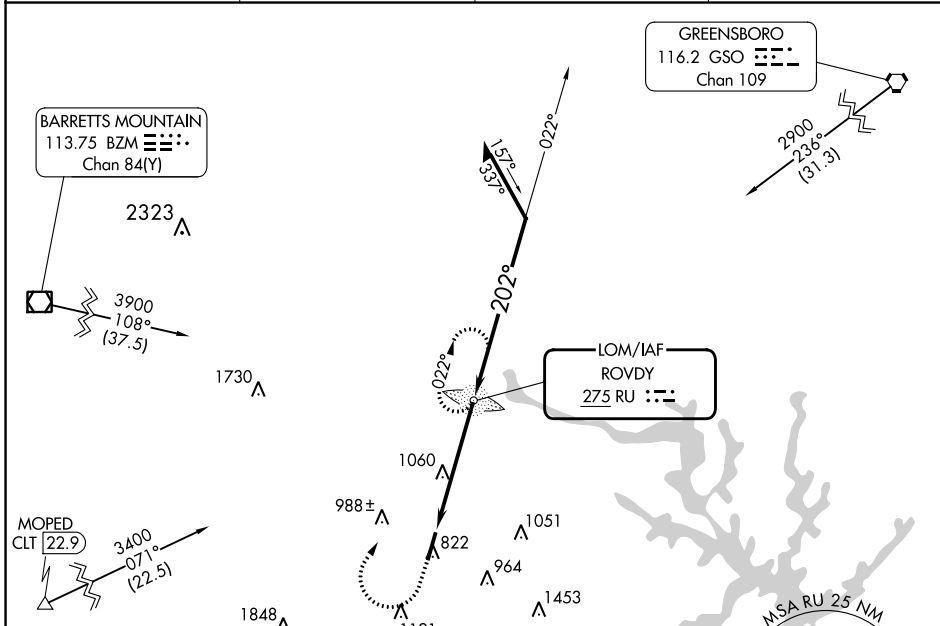
**NDB RWY 20**  
MID-CAROLINA RGNL (RUQ)

**▽** When local altimeter setting not received, use Lexington altimeter setting and increase all MDA 40 feet, increase S-20 Cats C and D, and Circling Cat C visibility 1/8 SM and Circling Cat D 1/4 SM. For inop ALS, increase Cat D visibility to 1 7/8 SM. For inop ALS when using Lexington altimeter setting increase Cat D visibility to 2 SM.

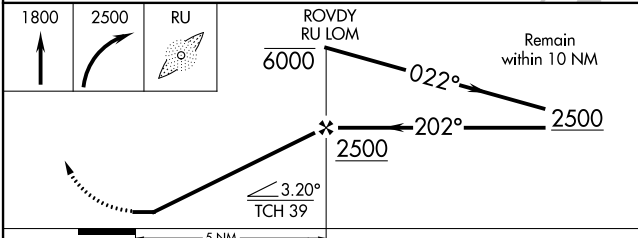
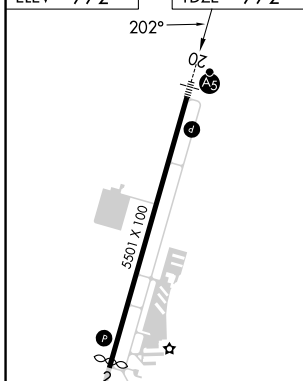
**△NA**

**MALS R** **MISSED APPROACH:** Climb to 1800 then climbing right turn to 2500 direct ROVDY LOM and hold.

AWOS-3 <b>118.175</b>	CHARLOTTE APP CON <b>128.325 307.8</b>	CLNC DEL <b>127.35</b>	UNICOM <b>122.725 (CTAF)</b>
--------------------------	---	---------------------------	---------------------------------



ELEV 772	TDZE 772
----------	----------



FAF to MAP 5 NM	Knots				
	60	90	120	150	180
Min:Sec	5:00	3:20	2:30	2:00	1:40

CATEGORY	A	B	C	D
S-20	1420-3/4	648 (700-3/4)	1420-1 1/8	648 (700-1 1/8)
<input checked="" type="checkbox"/> CIRCLING	1420-1	648 (700-1)	1440-1 7/8	1440-2
			668 (700-1 1/8)	668 (700-2)

SE-2, 28 NOV 2024 to 26 DEC 2024

SE-2, 28 NOV 2024 to 26 DEC 2024