

LOC I-CAC 111.7	APP CRS 174°	Rwy Idg TDZE Apt Elev	6705 1530 1534
---------------------------	------------------------	-----------------------------	---

ILS or LOC RWY 17

NEWTON-CITY-COUNTY (E WK)

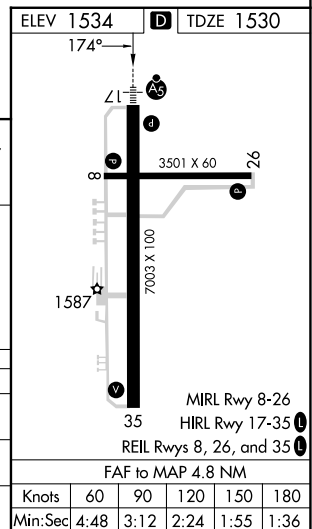
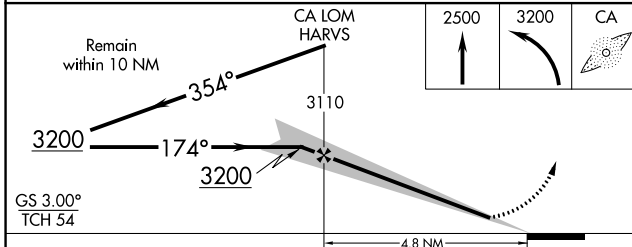
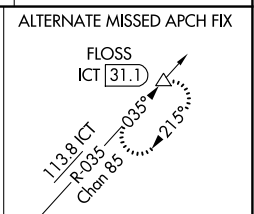
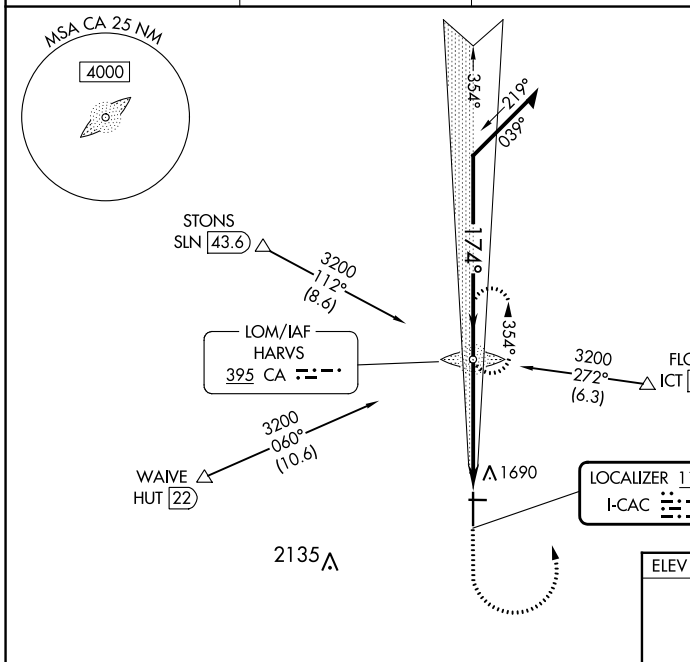
ADF required. DME required.

⚠ When local altimeter setting not received, use Wichita Dwight D Eisenhower Ntl altimeter setting: increase S-ILS 17 DA to 1817 feet; increase all MDAs 100 feet and visibility S-LOC 17 Cat C and D ½ SM and Circling Cat C ⅓ SM. For inop ALS, increase S-LOC 17 Cat C and D visibility to 1 ⅓ SM. For inop ALS when using Wichita Dwight D Eisenhower Ntl altimeter setting, increase S-ILS 17 visibility to ⅔ SM and S-LOC 17 Cat C and D to 1 ⅓ SM. Circling Rwy 8, 26 NA at night. Autopilot coupled approach NA below 2000.

MALSRL

MISSED APPROACH: Climb to 2500 then climbing left turn to 3200 direct HARVS LOM and hold.

AWOS-3PT 123.875	WICHITA APP CON 125.5 306.2	CLNC DEL 126.55	UNICOM 123.0 (CTAF)
----------------------------	---------------------------------------	---------------------------	-------------------------------



CATEGORY	A	B	C	D
S-ILS 17	1730-½ 200 (200-½)			
S-LOC 17	2000-½ 470 (500-½)	2000-1 470 (500-1)		
CIRCLING	2000-1 466 (500-1)	2000-1½ 466 (500-1½)	2100-2 566 (600-2)	

NC-2, 28 NOV 2024 to 26 DEC 2024

NC-2, 28 NOV 2024 to 26 DEC 2024