

ATIS
 125.2
 REID-HILLVIEW TOWER ★
 119.8 (CTAF) (RWY 13L-31R)
 126.1 (RWY 13R-31L)
 GND CON
 121.65

FIELD
 ELEV
 135

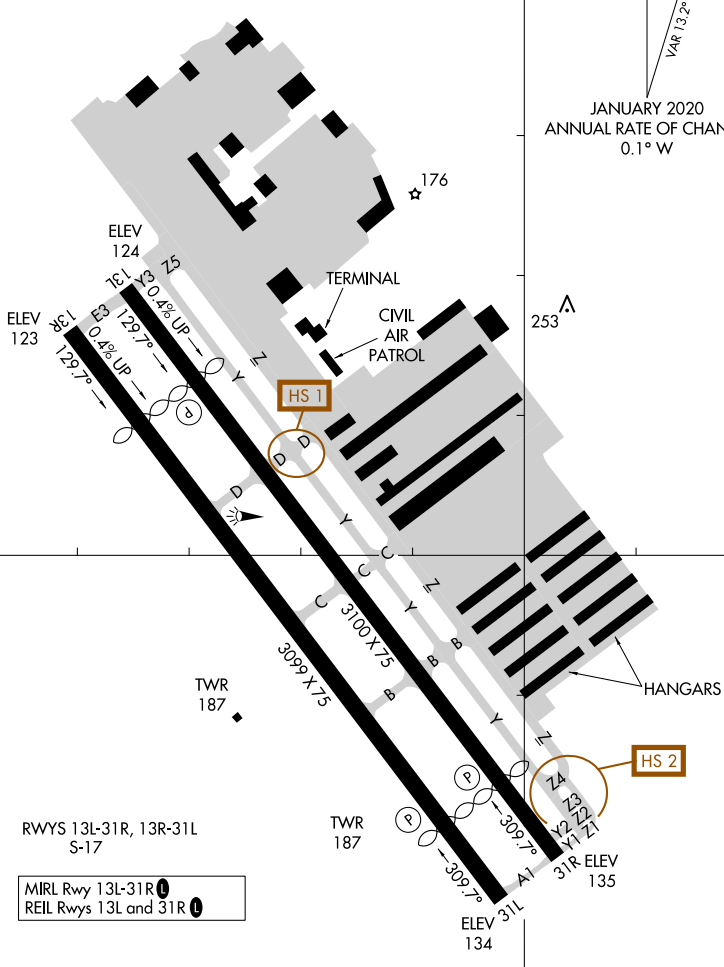
37°20.5'N



JANUARY 2020
 ANNUAL RATE OF CHANGE
 0.1° W

SW-2, 28 NOV 2024 to 26 DEC 2024

SW-2, 28 NOV 2024 to 26 DEC 2024



RWYS 13L-31R, 13R-31L
 S-17

MIRL Rwy 13L-31R
 REIL Rws 13L and 31R

CAUTION: BE ALERT TO RUNWAY CROSSING CLEARANCES.
READBACK OF ALL RUNWAY HOLDING INSTRUCTIONS IS REQUIRED.

121°49.5'W

121°49.0'W