

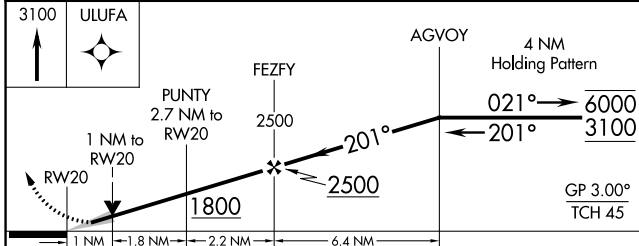
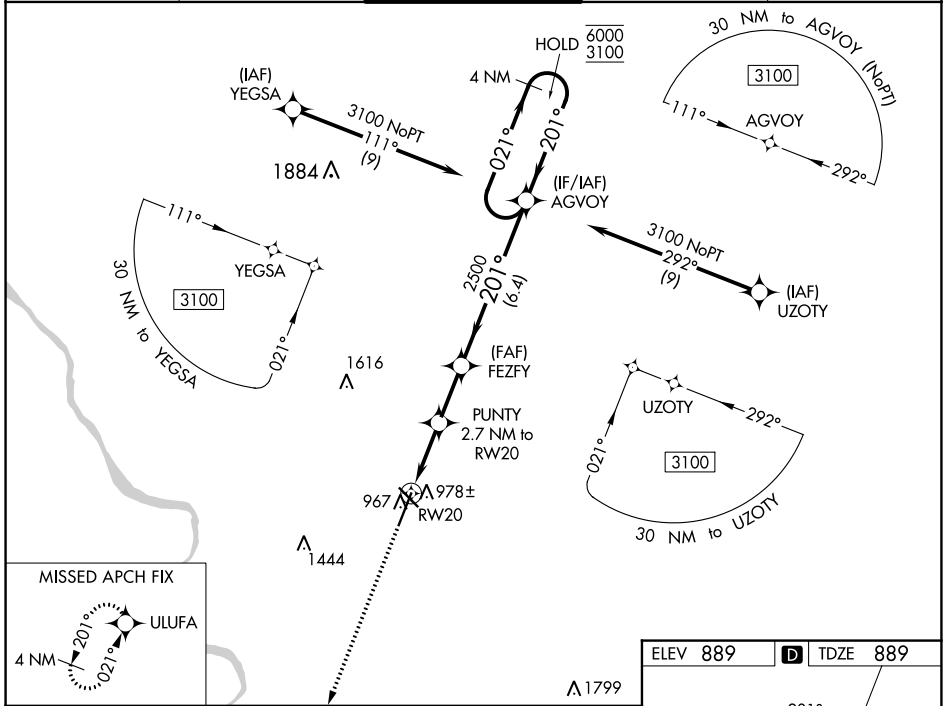
WAAS CH 93599 W20A	APP CRS 201°	Rwy Idg TDZE Apt Elev	7401 889 889
--	------------------------	-----------------------------	---

RNAV (GPS) RWY 20

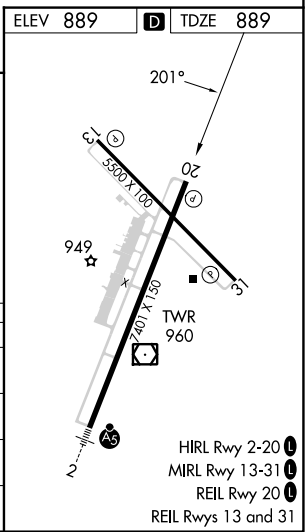
COLUMBIA RGNL (COU)

RNP APCH - GPS.		COLUMBIA TOWER ★		GND CON	UNICOM
Circling NA for Cat D west of Rwy 2 and 13. For uncompensated Baro-VNAV systems, LNAV/VNAV NA below -16°C or above 54°C.		119.3 (CTAF) 363.25		121.6	122.95

ATIS 128.45	MIZZO APP CON 124.375 353.925	COLUMBIA TOWER ★ 119.3 (CTAF) 363.25	GND CON 121.6	UNICOM 122.95
-----------------------	---	--	-------------------------	-------------------------



CATEGORY	A	B	C	D
LPV DA		1139-¾	250 (300-¾)	
LNAV/VNAV DA		1139-¾	250 (300-¾)	
LNAV MDA		1240-1	351 (400-1)	
CIRCLING	1280-1 391 (400-1)	1340-1 451 (500-1)	1360-1½ 471 (500-1½)	1440-2 551 (600-2)



NC-3, 28 NOV 2024 to 26 DEC 2024

NC-3, 28 NOV 2024 to 26 DEC 2024