


VOR/DME CCC 114.55 Chan 92 (Y)	APP CRS 042°	Rwy Idg TDZE 77 Apt Elev 81
--	------------------------	--

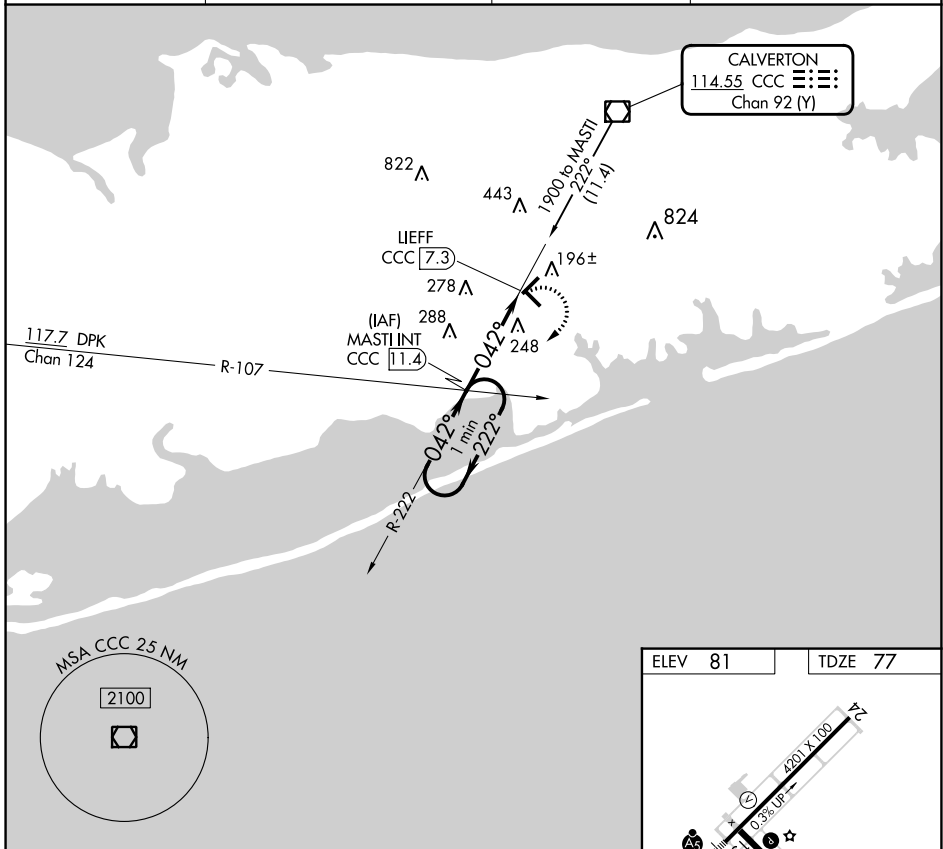
VOR RWY 6
BROOKHAVEN (HWV)

⚠ Inoperative table does not apply.
⚠ When local altimeter setting not received, use Islip altimeter setting and increase all MDAs 40 feet.

MALSR 

MISSED APPROACH: Climbing right turn to 1600 via CCC VOR/DME R-222 to MASTI INT/11.4 DME and hold.

ASOS 119.625	NEW YORK APP CON 120.05 343.75	CLNC DEL 133.2	UNICOM 122.8 (CTAF) 0
------------------------	--	--------------------------	---------------------------------



NE-2, 28 NOV 2024 to 26 DEC 2024

NE-2, 28 NOV 2024 to 26 DEC 2024

One Minute Holding Pattern		MASTI INT CCC 11.4		1600 CCC R-222		MASTI INT	
1600 ← 222°		← 042° →		1400		2.96° TCH 47	
2.5 NM		1.6 NM		CCC 8.9		LIEFF CCC 7.3	
CATEGORY		A		B		C	
S-6		620-1		543 (600-1)		NA	
C CIRCLING		620-1		539 (600-1)		NA	
		A		B		C	
		60		90		120	
		4:06		2:44		2:03	
		1:38		1:22			

REIL Rwy 15, 24 and 33
MIRL Rwy 6-24 and 15-33

FAF to MAP 4.1 NM

ELEV 81 TDZE 77