

WAAS CH 40427 W25A	APP CRS 253°	Rwy Idg TDZE Apt Elev	4153 730 730
--	------------------------	-----------------------------	---

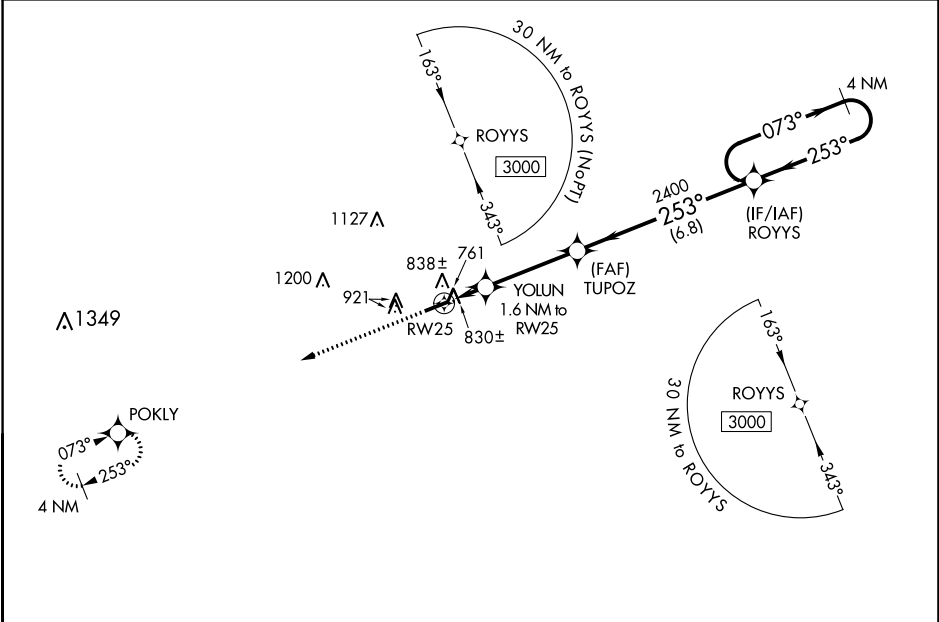
RNAV (GPS) RWY 25

WILLIAMS COUNTY (ØG6)

⚠ When VGSi inop, Straight-in/Circling Rwy 25 procedure NA at night. DME/DME RNP-0.3 NA. Helicopter visibility reduction below 1 SM NA. Use Defiance Meml altimeter setting; when not received, use De Kalb County altimeter setting; increase all MDAs 60 feet and LP and LNAV and Circling visibility Cats C/D ¼ SM.

MISSED APPROACH:
Climb to 3000 direct POKLY and hold.

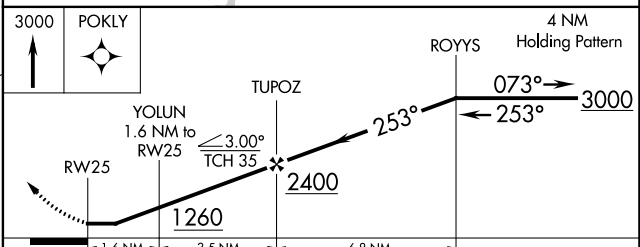
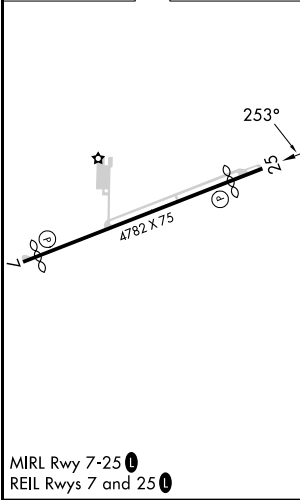
DFI ASOS 121.425	TOLEDO APP CON 134.35 307.0	UNICOM 122.8 (CTAF)	123.0
----------------------------	---------------------------------------	-------------------------------	--------------



EC-2, 28 NOV 2024 to 26 DEC 2024

EC-2, 28 NOV 2024 to 26 DEC 2024

ELEV 730	TDZE 730
----------	----------



CATEGORY	A	B	C	D
LP MDA	1120-1	390 (400-1)	1120-1½	390 (400-1½)
LNAV MDA	1140-1	410 (500-1)	1140-1½	410 (500-1½)
CIRCLING	1300-1	570 (600-1)	1300-1½ 570 (600-1½)	1520-2½ 790 (800-2½)