

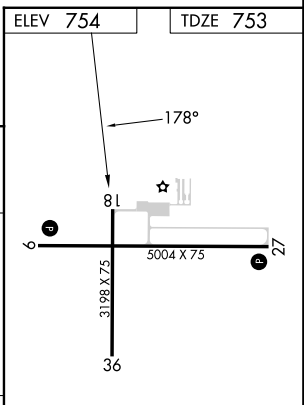
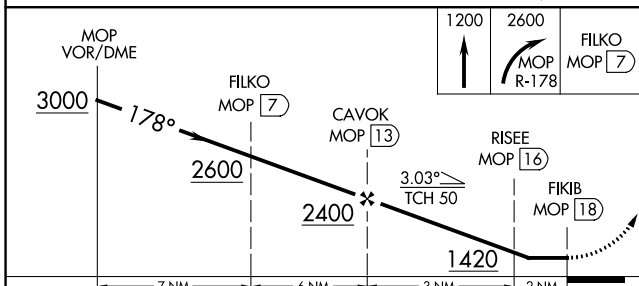
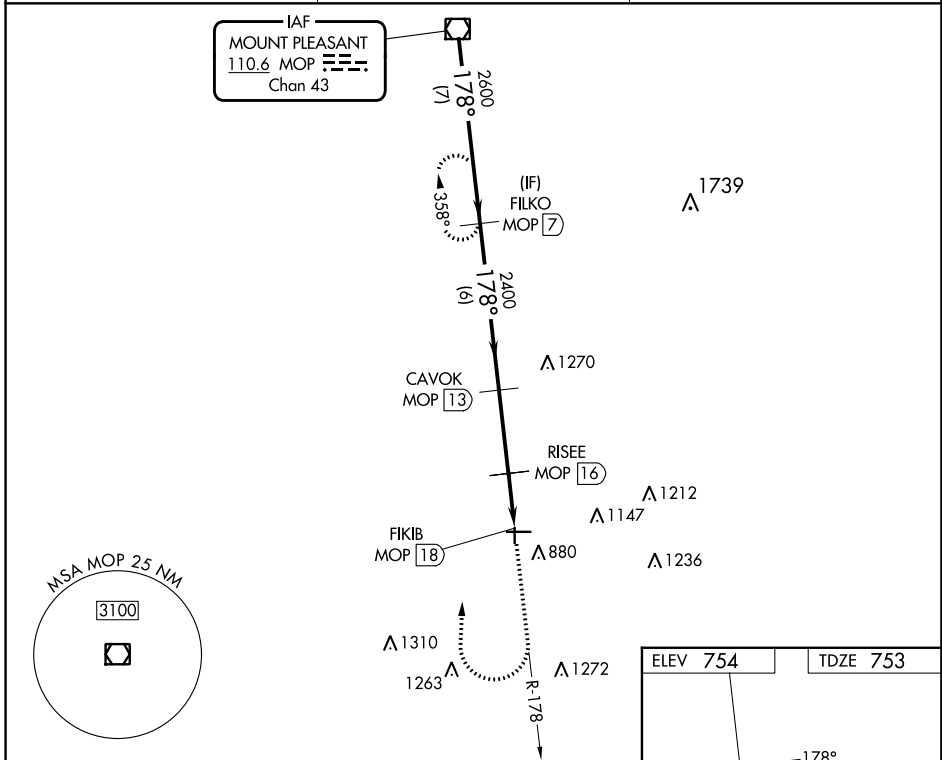
VOR/DME MOP 110.6 Chan 43	APP CRS 178°	Rwy ldg 3198 TDZE 753 Apt Elev 754
-----------------------------------------------	------------------------	---------------------------------------------------------------

VOR RWY 18
GRATIOT COMMUNITY (AMN)

⚠ NA Night landing: Rwy 18, 36 NA. DME required. Straight-in Rwy 18 NA at night, Circling Rwy 18, 36 NA at night. Rwy 18 helicopter visibility reduction below 1 SM NA.

MISSED APPROACH: Climb to 2000 then climbing right turn to 2600 on MOP VOR/DME R-178 direct FILKO/MOP VOR/DME 7 DME and hold.

AWOS-3P 124.175	GREAT LAKES APP CON* 126.45 235.625	UNICOM 122.8 (CTAF)
---------------------------	-----------------------------------------------	-------------------------------



CATEGORY	A	B	C	D
S-18	1140-1	387 (400-1)	1140-1¼ 387 (400-1¼)	NA
CIRCLING	1180-1 426 (500-1)	1220-1 466 (500-1)	1460-2 706 (800-2)	NA

REIL Rwys 9 and 27 **⓪**
MRL Rwys 9-27 and 18-36 **⓪**

EC-1, 28 NOV 2024 to 26 DEC 2024

EC-1, 28 NOV 2024 to 26 DEC 2024