

APP CRS	Rwy Idg	4494
127°	TDZE	882
	Apt Elev	887

RNAV (GPS) RWY 13

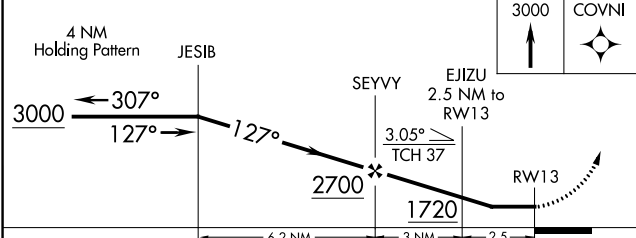
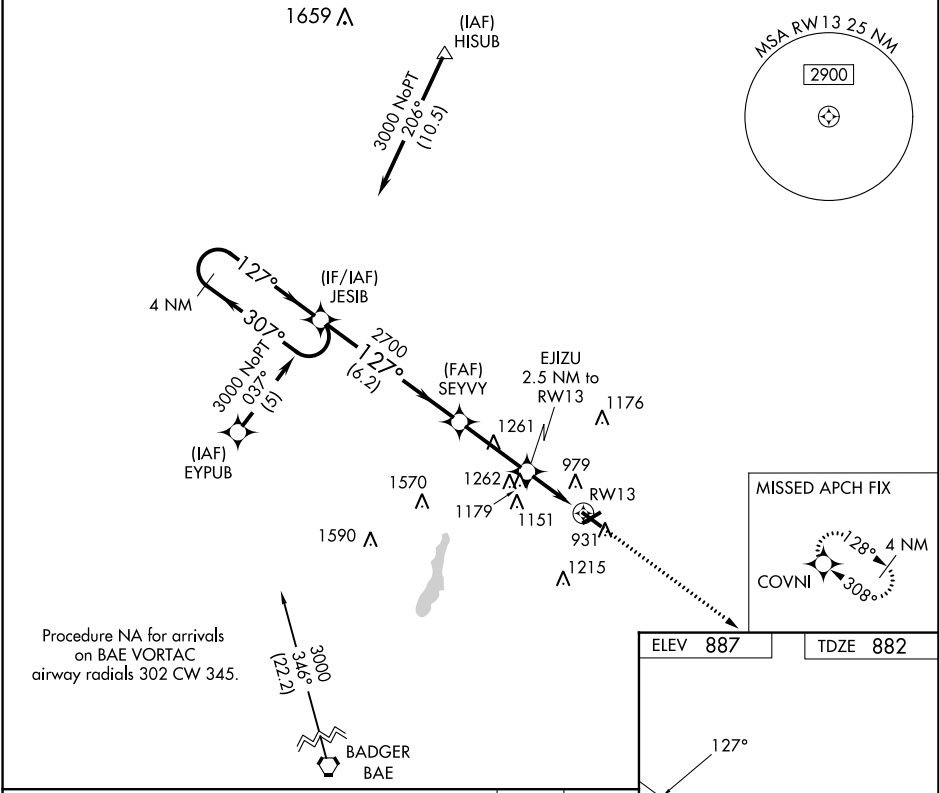
WEST BEND MUNI (E/TB)

RNP APCH - GPS.

⚠ When local altimeter setting not received, use Milwaukee/Lawrence J Timmerman altimeter setting: increase all MDA 80 feet and increase LNAV Cat C/D visibility ½ SM and Circling Cat C/D visibility ¼ SM. Night landing: Rwy 6 NA. Helicopter visibility reduction below ¼ SM NA.

MISSED APPROACH: Climb to 3000 direct COVNI and hold.

AWOS-3 120.0	MILWAUKEE APP CON 125.35 307.0	CLNC DEL 124.75	UNICOM 123.05 (CTAF) 0
------------------------	--	---------------------------	----------------------------------



ELEV 887	TDZE 882
----------	----------

127°

3858 X 75 0.3% UP

4494 X 75 0.3% UP

REIL Rwy 13 and 31 0

MIRL Rwy 6-24 and 13-31 0

CATEGORY	A	B	C	D
LNAV MDA	1480-1 598 (600-1)	1480-1½ 598 (600-1½)	1480-1¾ 598 (600-1¾)	1480-2 598 (600-2)
CIRCLING	1480-1 593 (600-1)	1520-1 633 (700-1)	1560-2 673 (700-2)	1560-2¼ 673 (700-2¼)

EC-3, 28 NOV 2024 to 26 DEC 2024

EC-3, 28 NOV 2024 to 26 DEC 2024