

# RNAV (GPS) RWY 6

WEST BEND MUNI (ETB)

APP CRS <b>060°</b>	Rwy Idg <b>3898</b>
	TDZE <b>887</b>
	Apt Elev <b>887</b>

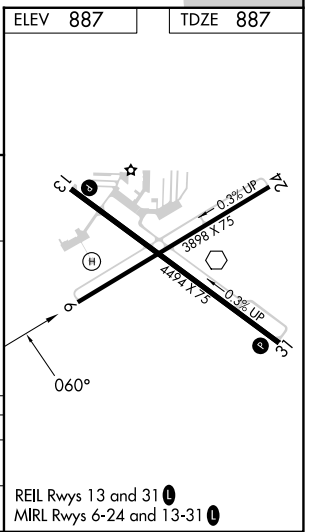
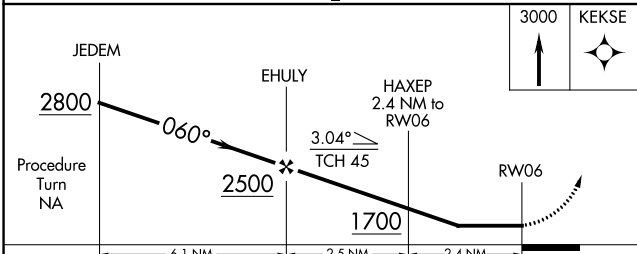
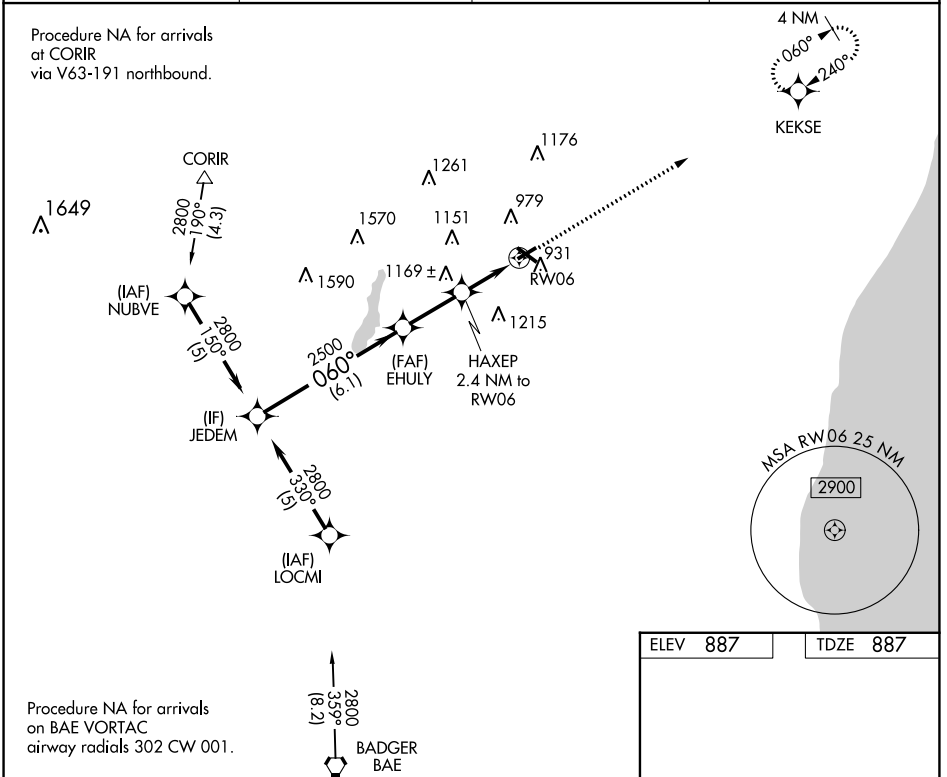
RNP APCH - GPS.

**▼** When local altimeter setting not received, use Milwaukee/Lawrence J. Timmerman altimeter setting and increase all MDA 80 feet and LNAV and Circling Cat C/D visibility ¼ mile.

**▲** Night landing: Rwy 6 NA. Helicopter visibility reduction below 1 SM NA.

**MISSED APPROACH:**  
Climb to 3000 direct  
KEKSE and hold.

AWOS-3 <b>120.0</b>	MILWAUKEE APP CON <b>125.35 307.0</b>	CLNC DEL <b>124.75</b>	UNICOM <b>123.05 (CTAF) ①</b>
------------------------	--	---------------------------	----------------------------------



CATEGORY	A	B	C	D
LNAV MDA	1460-1 573 (600-1)	573 (600-1)	1460-1 <sup>5</sup> / <sub>8</sub> 573 (600-1 <sup>5</sup> / <sub>8</sub> )	1460-1 <sup>3</sup> / <sub>4</sub> 573 (600-1 <sup>3</sup> / <sub>4</sub> )
CIRCLING	1460-1 573 (600-1)	1520-1 633 (700-1)	1560-2 673 (700-2)	1560-2 <sup>1</sup> / <sub>4</sub> 673 (700-2 <sup>1</sup> / <sub>4</sub> )

EC-3, 28 NOV 2024 to 26 DEC 2024

EC-3, 28 NOV 2024 to 26 DEC 2024