

WAAS CH <b>93914</b> <b>W35A</b>	APP CRS <b>355°</b>	Rwy Idg TDZE Apt Elev	<b>5501</b> <b>1423</b> <b>1433</b>
--	------------------------	-----------------------------	---

# RNAV (GPS) RWY 35

ALTUS/QUARTZ MOUNTAIN RGNL (A.X.S)

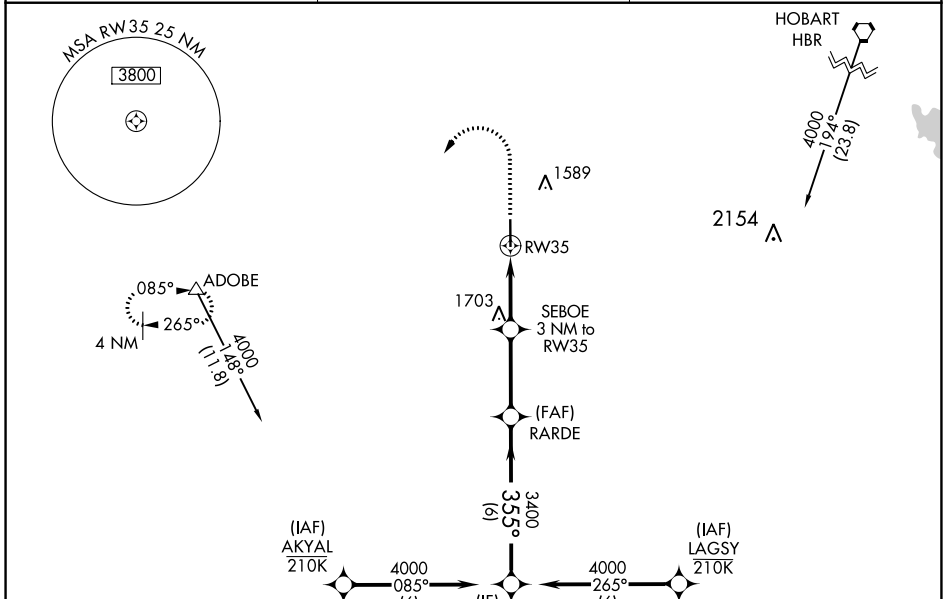
RNP APCH.  
 ⚠ For uncompensated Baro-VNAV systems, LNAV/VNAV NA below -17°C or above 54°C.

MISSED APPROACH: Climb to 2100 then climbing left turn to 4000 direct ADOBE and hold.

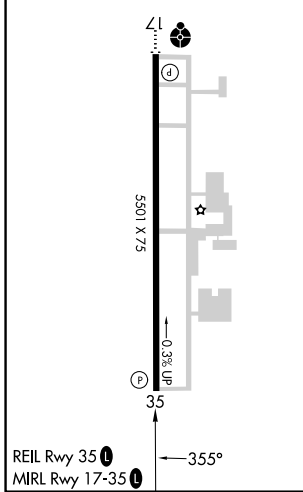
AWOS-3PT  
**118.825**

ALTUS APP CON\*  
**125.1 353.7**

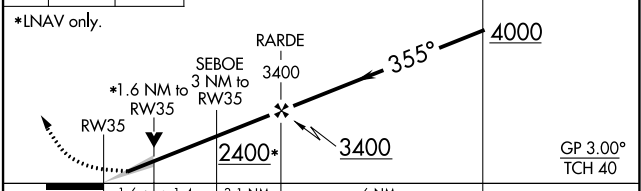
UNICOM  
**122.8 (CTAF) 0**



ELEV 1433 | TDZE 1423



2100 4000 ADOBE  
 VGSI and RNAV glidepath not coincident (VGSI Angle 3.00/TCH 40).  
 \*LNAV only.



CATEGORY	A	B	C	D
LPV DA	1673-7/8		250 (300-7/8)	NA
LNAV/VNAV DA	1673-7/8		250 (300-7/8)	NA
LNAV MDA	1960-1	537 (600-1)	1960-1 1/2 537 (600-1 1/2)	NA
<b>C</b> CIRCLING	1960-1	527 (600-1)	2020-1 1/2 587 (600-1 1/2)	NA

SC-1, 28 NOV 2024 to 26 DEC 2024

SC-1, 28 NOV 2024 to 26 DEC 2024