

|  |                        |   |
|--|------------------------|---|
| WAAS<br>CH <b>82215</b><br><b>W28A</b> | APP CRS<br><b>277°</b> | Rwy Idg <b>4971</b><br>TDZE <b>1134</b><br>Apt Elev <b>1136</b> |
|--|------------------------|---|

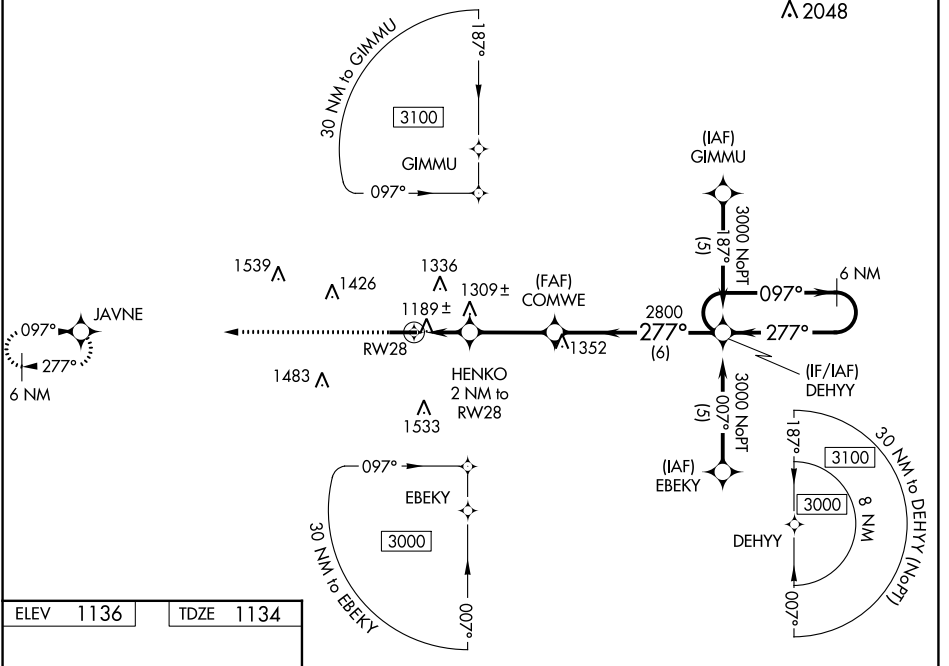
# RNAV (GPS) RWY 28

WAYNE COUNTY (BJJ)

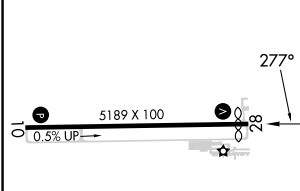
**⚠** Baro-VNAV NA when using Akron-Canton Rgnl altimeter setting. For uncompensated Baro-VNAV systems, LNAV/VNAV NA below -17°C (2°F) or above 54°C (130°F). Helicopter visibility reduction below 3/4 SM NA. When local altimeter setting not received, use Akron-Canton Rgnl altimeter setting: increase LPV DA to 1458 feet, LNAV/VNAV DA to 1649 feet, and visibility LPV all Cats 1/4 SM and LNAV/VNAV all Cats 1/2 SM; increase all MDA 60 feet and visibility LNAV Cat C/D 1/2 SM and Circling Cat C/D 1/4 SM.

**MISSED APPROACH:** Climb to 3000 direct JAVNE and hold.

|                        |   |                           |                                   |
|------------------------|---|---------------------------|-----------------------------------|
| ASOS<br><b>118.075</b> | CLEVELAND APP CON *<br><b>125.5 371.875</b> | CLNC DEL<br><b>121.75</b> | UNICOM<br><b>122.975 (CTAF) ①</b> |
|------------------------|---|---------------------------|-----------------------------------|



|           |           |
|-----------|-----------|
| ELEV 1136 | TDZE 1134 |
|-----------|-----------|



|            |                    |  |                      |
|------------|--------------------|--|----------------------|
| 3000       | JAVNE              | VGSI and RNAV glidepath not coincident (VGSI Angle 3.00/TCH 33). | 6 NM Holding Pattern |
| *LNAV only | HENKO 2 NM to RW28 | COMWE  | DEHYH                |
|            | RW28               | 1800*  | 2800                 |
|            |                    | 2 NM   | 3.1 NM               |
|            |                    | 277°   | 097°                 |
|            |                    | 3000   | GP 3.00° TCH 35      |

| CATEGORY     | A                          | B                     | C                             | D                             |
|--------------|----------------------------|-----------------------|-------------------------------|-------------------------------|
| LPV DA       | 1398-1 264 (300-1)         |                       |                               |                               |
| LNAV/VNAV DA | 1589-1 1/8 455 (500-1 1/8) |                       |                               |                               |
| LNAV MDA     | 1560-1                     | 426 (500-1)           | 1560-1 1/4                    | 426 (500-1 1/4)               |
| CIRCLING     | 1600-1<br>464 (500-1)      | 1700-1<br>564 (600-1) | 1800-1 3/4<br>664 (700-1 3/4) | 1840-2 1/4<br>704 (800-2 1/4) |

REIL Rwy 10 and 28 ①  
HIRL Rwy 10-28 ①

EC-2, 28 NOV 2024 to 26 DEC 2024

EC-2, 28 NOV 2024 to 26 DEC 2024