

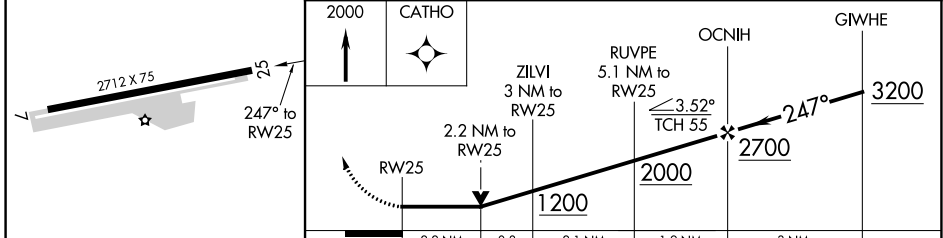
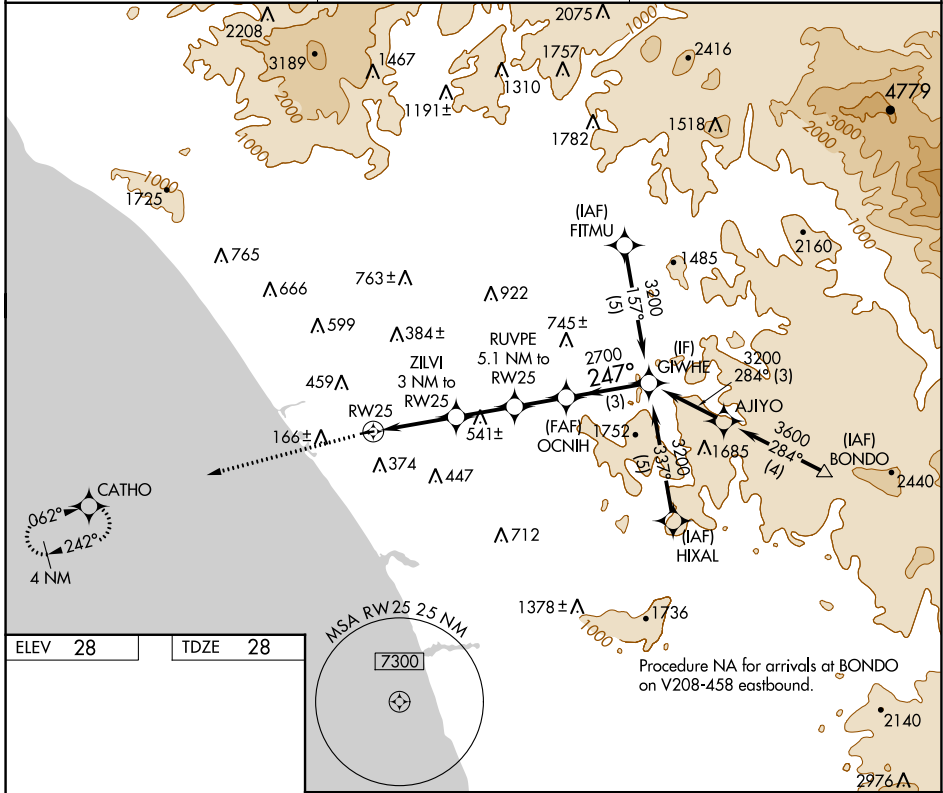
APP CRS <b>247°</b>	Rwy ldg <b>2712</b>
	TDZE <b>28</b>
	Apt Elev <b>28</b>

# RNAV (GPS) RWY 25

BOB MAXWELL MEML AIRFIELD (OKB)

RNP APCH-GPS.	MISSED APPROACH: Climb to 2000 direct CATHO and hold.
<p><b>▼</b> Circling Rwy 7 NA at night.</p> <p><b>▲</b> Rwy 25 helicopter visibility reduction below 3/4 SM NA.</p>	

ASOS <b>127.8</b>	SOCAL APP CON <b>127.3 323.0</b>	UNICOM <b>122.725 (CTAF) 0</b>
----------------------	-------------------------------------	-----------------------------------




SW-3, 28 NOV 2024 to 26 DEC 2024

SW-3, 28 NOV 2024 to 26 DEC 2024