


LOC/DME I-SVH <b>111.75</b> Chan <b>54 (Y)</b>	APP CRS <b>285°</b>	Rwy Idg <b>6453</b> TDZE <b>967</b> Apt Elev <b>968</b>
--	------------------------	---

# ILS Y or LOC Y RWY 28

STATESVILLE RGNL (SVH)

**DME required.**

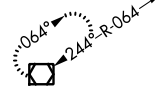
**▼** When local altimeter setting not received, use Lincolnnton altimeter setting and increase ILS DA to 1219 and all MDA 60 feet; increase S-LOC 28 Cats C/D visibility 1/8 mile and Circling Cat C visibility 1/4 mile. VDP NA when using Lincolnnton altimeter setting. For inop MALSRR when using Lincolnnton altimeter setting, increase S-ILS 28 all Cats visibility to 7/8 mile and S-LOC 28 Cats C/D visibility to 1 mile.

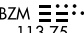
**MALSRR** 

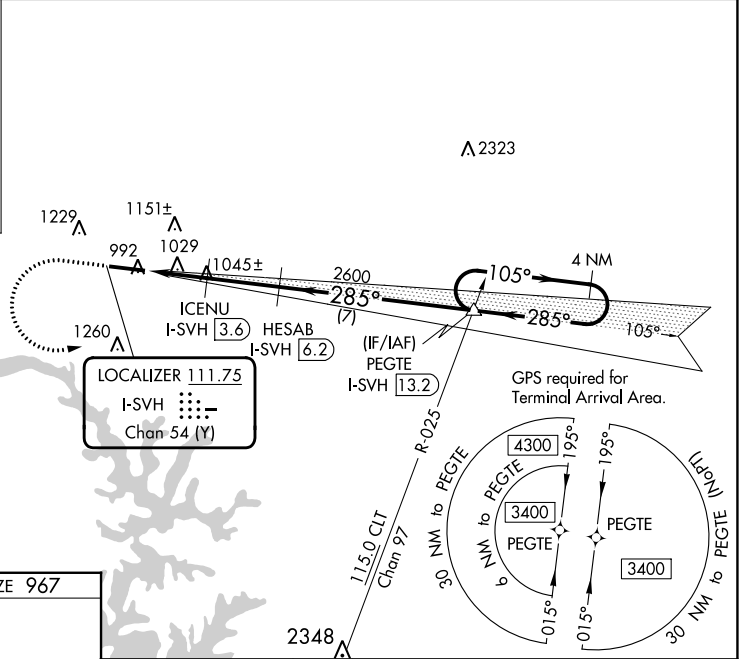
**MISSED APPROACH:** Climb to 1700 then climbing left turn to 3400 on heading 105° and on CLT VOR/DME R-025 to PEGTE INT/I-SVH 13.2 DME and hold.

AWOS-3 <b>119.225</b>	ATLANTA CENTER <b>125.15 263.0</b>	UNICOM <b>123.075 (CTAF) 0</b>
--------------------------	---------------------------------------	-----------------------------------

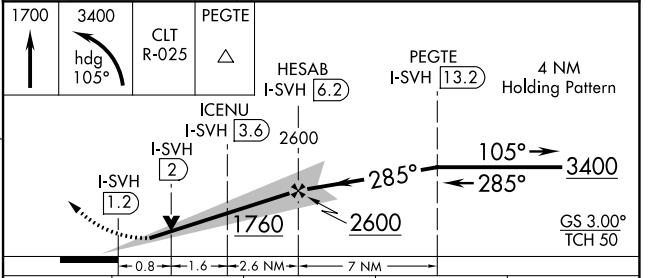
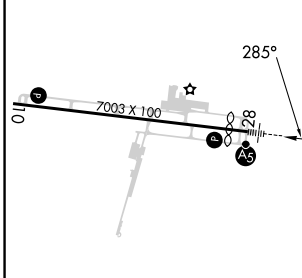
**ALTERNATE MISSED APCH FIX**



**BARRETT'S MOUNTAIN**  
BZM   
113.75  
Chan 84 (Y)



ELEV 968	<b>D</b>	TDZE 967
----------	----------	----------



CATEGORY	A	B	C	D
S-ILS 28	1167-1/2		200 (200-1/2)	
S-LOC 28	1280-1/2		313 (400-1/2)	
<b>C</b> CIRCLING	1420-1 452 (500-1)	1540-1 572 (600-1)	1540-1 1/2 572 (600-1 1/2)	1560-2 592 (600-2)

REIL Rwy 10 **0**  
HIRL Rwy 10-28 **0**

SE-2, 28 NOV 2024 to 26 DEC 2024

SE-2, 28 NOV 2024 to 26 DEC 2024