

# CHIEF NINE DEPARTURE

AL-5687 (FAA)

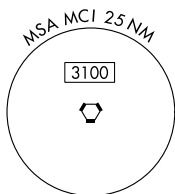
JOHNSON COUNTY EXEC (OJC)

OLATHE, KANSAS

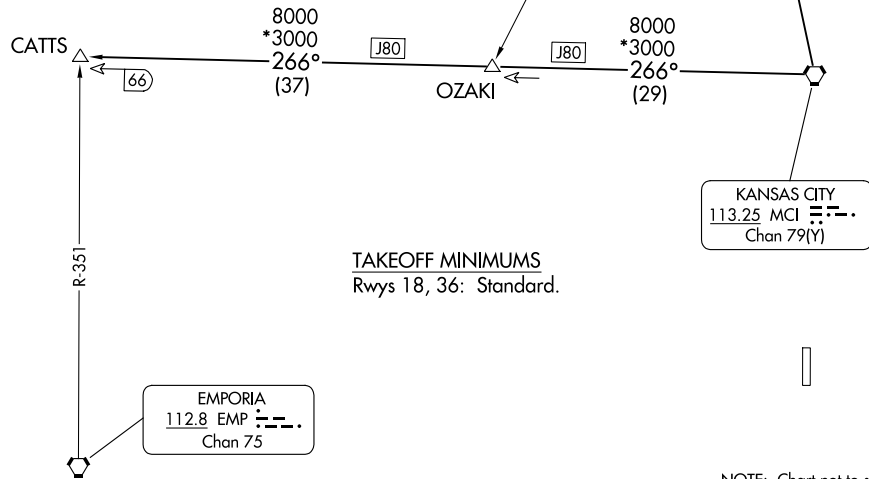
**TOP ALTITUDE:  
10000**

RADAR required.

KANSAS CITY DEP CON  
118.9 251.075  
ATIS  
119.35



ST. JOSEPH  
115.5 STJ ---  
Chan 102



TAKEOFF MINIMUMS  
Rwys 18, 36: Standard.

NOTE: Chart not to scale.

## DEPARTURE ROUTE DESCRIPTION

TAKEOFF ALL RUNWAYS: Climb on assigned heading for RADAR vectors to appropriate route. Maintain 10000 or as assigned by ATC, expect filed altitude 10 minutes after departure.

CATTs TRANSITION (CHIEF9.CATTs): From over MCI VORTAC on MCI R-266 to CATTs.

ST. JOSEPH TRANSITION (CHIEF9.STJ): From over MCI VORTAC on MCI R-343 and STJ R-160 to STJ VORTAC.

# CHIEF NINE DEPARTURE