

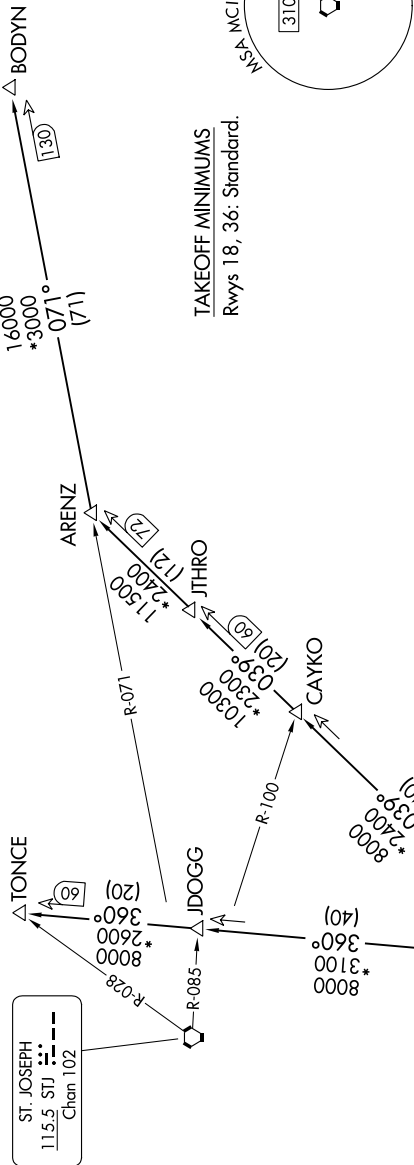
ROYAL TWO DEPARTURE

NC-2, 28 NOV 2024 to 26 DEC 2024

KANSAS CITY DEP CON
118.9 251.075
ATIS
119.35

RADAR and DME required.

TOP ALTITUDE:
10000



DEPARTURE ROUTE DESCRIPTION

TAKEOFF ALL RUNWAYS: Climb on assigned heading for RADAR vectors to appropriate route. Maintain 10000, expect filed altitude 10 minutes after departure.

ARENZ TRANSITION (ROYAL2.ARENZ): From over MCI VORTAC on MCI R-039 to ARENZ.

BODYN TRANSITION (ROYAL2.BODYN): From over MCI VORTAC on MCI R-039 to ARENZ, then on STJ R-071 to BODYN.

TONCE TRANSITION (ROYAL2.TONCE): From over MCI VORTAC on MCI R-360 to TONCE.

NOTE: Chart not to scale.

NC-2, 28 NOV 2024 to 26 DEC 2024