

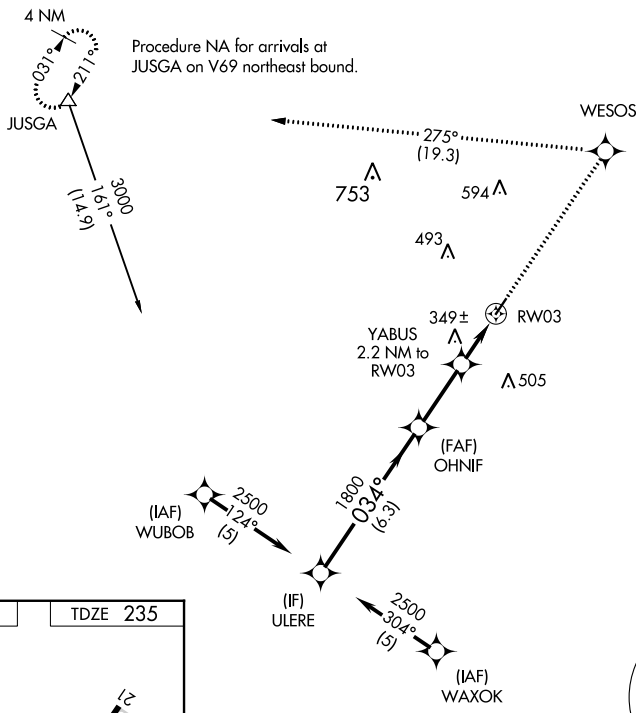
APP CRS 034°	Rwy Idg 3829
	TDZE 235
	Apt Elev 235

RNAV (GPS) RWY 3

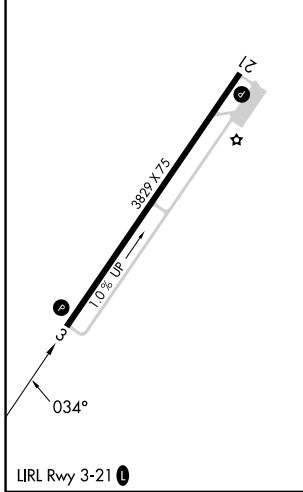
WARREN MUNI (3M9)

RNP APCH - GPS.	MISSED APPROACH: Climb to 3000 direct WESOS and on track 275° to JUSGA and hold.
▼ ▲ NA	Use Monticello altimeter setting. Procedure NA at night.

LLQ ASOS 133.325	MEMPHIS CENTER 135.875 269.35	CTAF 122.9 0
----------------------------	---	------------------------



ELEV 235	TDZE 235
----------	----------



VGSIs and descent angles not coincident (VGSi Angle 3.00/TCH 40).			
ULERE	OHNIF	YABUS	RW03
2500	1800	920	
3000	WESOS	JUSGA	
↑	✧	tr 275°	△
6.3 NM		2.7 NM	
2.2 NM		2.2 NM	
CATEGORY	A	B	C
LNAV MDA	660-1	425 (500-1)	660-1¼ 425 (500-1¼)
			NA

SC-1, 28 NOV 2024 to 26 DEC 2024

SC-1, 28 NOV 2024 to 26 DEC 2024