

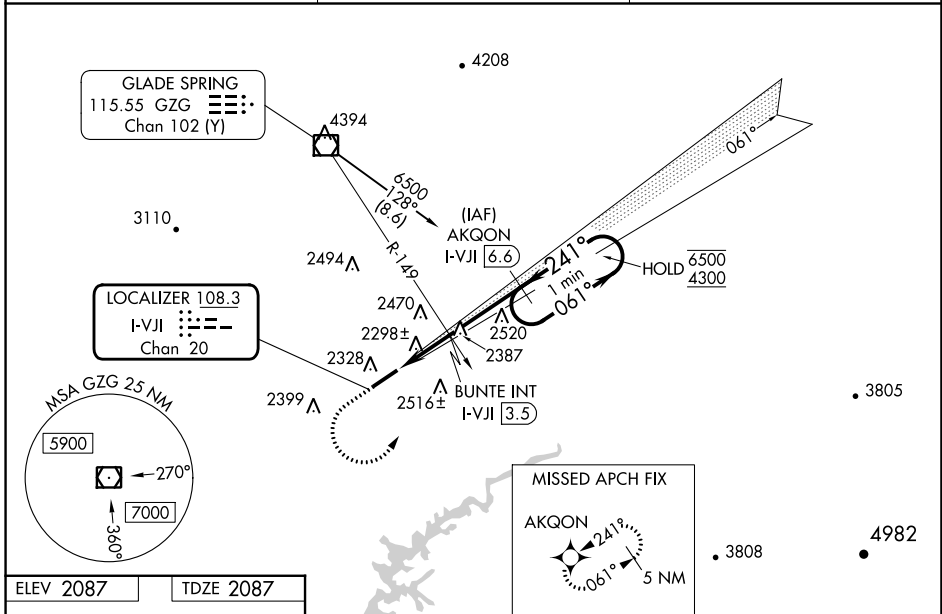
LOC/DME I-VJI <b>108.3</b> Chan <b>20</b>	APP CRS <b>241°</b>	Rwy Idg TDZE Apt Elev	<b>5500</b> <b>2087</b> <b>2087</b>
---	------------------------	-----------------------------	---

# LOC RWY 24

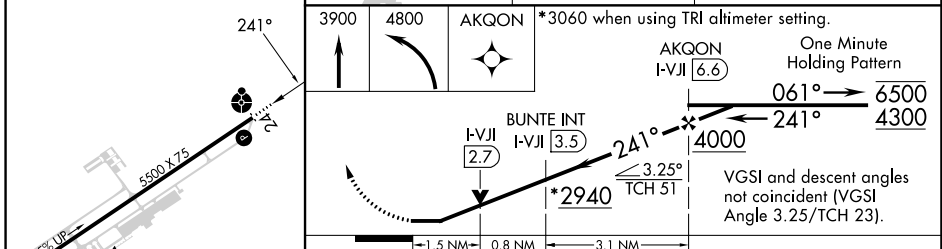
VIRGINIA HIGHLANDS (VJI)

RNP APCH - GPS.	ODALS 	MISSED APPROACH: (Do not exceed 210K until AKQON) Climb to 3900 then climbing left turn to 4800 direct AKQON and hold.
DME or RADAR required.		
<p><b>⚠</b> Rwy 24 helicopter visibility reduction below 3/4 SM NA. VDP NA when using TRI altimeter setting. Inop table does not apply to S-LOC 24 Cat C and D. For inop ALS, increase BUNTE fix minimums S-LOC 24 Cat C and D visibility to 1 1/2 SM.</p>		

AWOS-3 <b>128.125</b>	TRI CITY APP CON * <b>125.25 349.0</b>	UNICOM <b>122.8(CTAF)</b>
--------------------------	---	------------------------------



ELEV 2087	TDZE 2087
-----------	-----------



CATEGORY	A	B	C	D
S-LOC 24 *	2940-3/4 853 (900-3/4)	2940-1 853 (900-1)	2940-2 1/2	853 (900-2 1/2)
<b>C</b> CIRCLING	2940-1 1/4	853 (900-1 1/4)	2940-2 1/2 853 (900-2 1/2)	3080-3 993 (1000-3)
BUNTE FIX MINIMUMS				
S-LOC 24	2640-3/4	553 (600-3/4)	2640-1 3/8	553 (600-1 3/8)
<b>C</b> CIRCLING	2860-1	773 (800-1)	2860-2 1/4 773 (800-2 1/4)	3080-3 993 (1000-3)

MIRL Rwy 6-24 **Ⓛ**  
REIL Rwy 6 and 24 **Ⓛ**

FAF to MAP 5.4 NM

Knots	60	90	120	150	180
Min:Sec	5:24	3:36	2:42	2:10	1:48

NE-3, 28 NOV 2024 to 26 DEC 2024

NE-3, 28 NOV 2024 to 26 DEC 2024