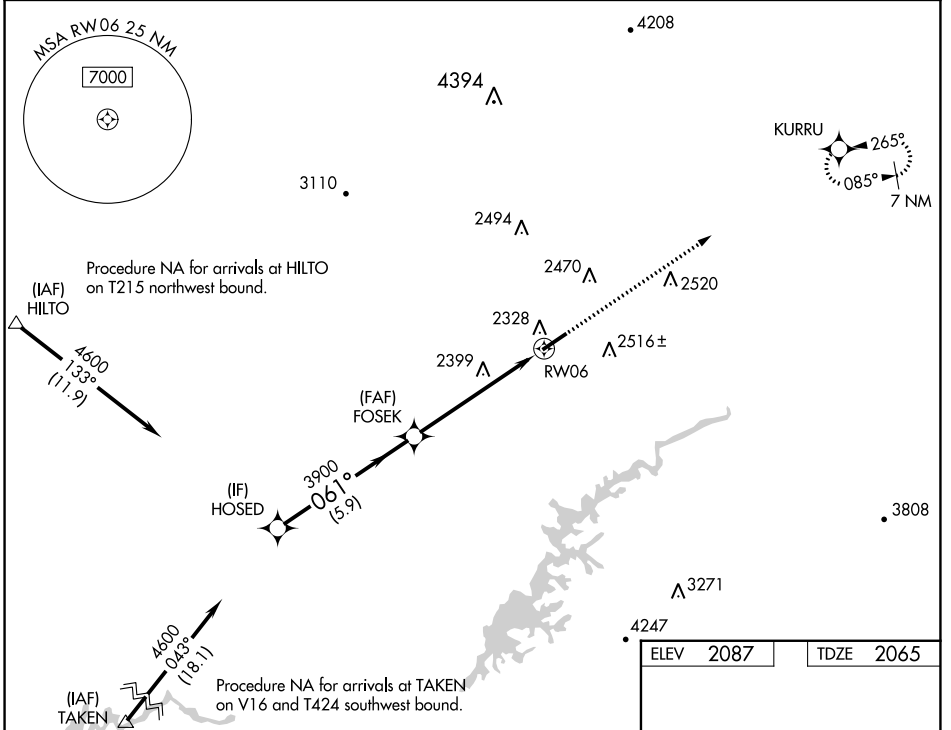


WAAS CH 82411 W06A	APP CRS 061°	Rwy Idg TDZE Apt Elev 5500 2065 2087
--	------------------------	--

RNAV (GPS) RWY 6

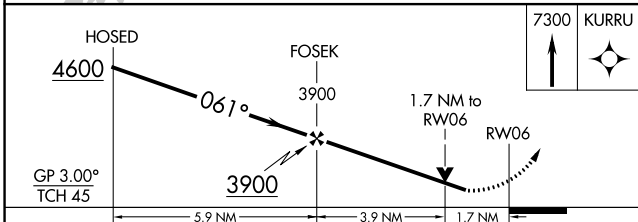
VIRGINIA HIGHLANDS (VJI)

RNP APCH - GPS.		MISSED APPROACH: Climb to 7300 direct KURRU and hold, continue climb-in-hold to 7300.
<p>▼ Rwy 6 helicopter visibility reduction below 3/4 SM NA. For uncompensated Baro-VNAV systems, LNAV/VNAV NA below -19°C or above 54°C.</p> <p>▲</p>		
AWOS-3 128.125	TRI CITY APP CON * 125.25 349.0	UNICOM 122.8 (CTAF) 0

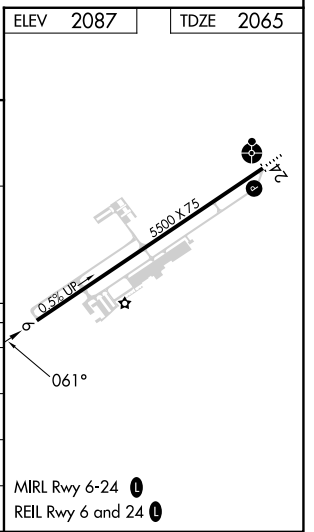


NE-3, 28 NOV 2024 to 26 DEC 2024

NE-3, 28 NOV 2024 to 26 DEC 2024



CATEGORY	A	B	C	D
LPV DA	2456-1 1/8 391 (400-1 1/8)			
LNAV/VNAV DA	2528-1 3/8 463 (500-1 3/8)			
LNAV MDA	2660-1 595 (600-1)		2660-1 3/4 595 (600-1 3/4)	
CIRCLING	2860-1 773 (800-1)		2860-2 1/4 773 (800-2 1/4)	3080-3 993 (1000-3)



MIRL Rwy 6-24 0
REIL Rwy 6 and 24 0