

(ILEXY4.ILEXY) 23166

# ILEXY FOUR DEPARTURE (RNAV) AL-5724 (FAA)

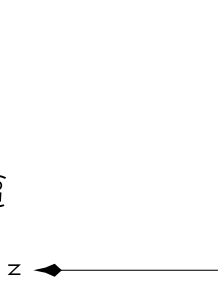
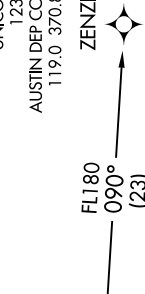
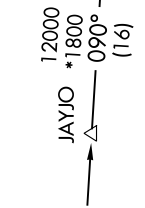
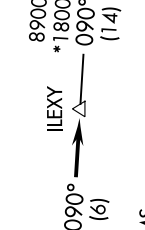
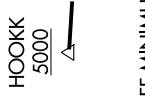
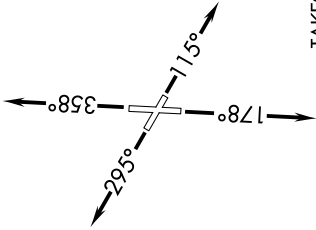
GEORGETOWN EXEC (GTU)  
GEORGETOWN, TEXAS

SC-3, 28 NOV 2024 to 26 DEC 2024

RNAV 1- DME/DME/IRU or GPS.  
RADAR required.

TOP ALTITUDE:  
ASSIGNED BY ATC

ATIS 118.6  
CLNC DEL 119.125  
CLNC DEL (when lwr closed) 121.1  
GND CON 119.125  
GEORGETOWN TOWER\* 120.225 (CTAF)  
UNICOM 123.0  
AUSTIN DEP CON 119.0 370.85



### TAKEOFF MINIMUMS

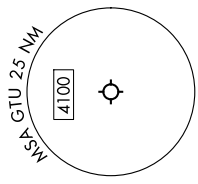
Rwys 11, 29, 36: Standard.

Rwys 18: 200-1/4 or standard with minimum climb of 250' per NM to 1000.

NOTE: Houston terminal area arrivals expect routing from IILEXY.

NOTE: JAYJO transition to join V306 only.

NOTE: Aircraft not destined the Houston terminal area or joining V306 must file the ZENZI transition.



NOTE: Chart not to scale.

### DEPARTURE ROUTE DESCRIPTION

- TAKEOFF RUNWAY 11: Climb on heading 115° or as assigned by ATC for vectors to cross HOOKK at or above 5000, thence . . .
- TAKEOFF RUNWAY 18: Climb on heading 178° or as assigned by ATC for vectors to cross HOOKK at or above 5000, thence . . .
- TAKEOFF RUNWAY 29: Climb on heading 295° or as assigned by ATC for vectors to cross HOOKK at or above 5000, thence . . .
- TAKEOFF RUNWAY 36: Climb on heading 358° or as assigned by ATC for vectors to cross HOOKK at or above 5000, thence . . .

. . . on track 090° to IILEXY, then on transition. Maintain altitude assigned by ATC. Expect filed altitude 10 minutes after departure.

JAYJO TRANSITION (ILEXY4.JAYJO)  
ZENZI TRANSITION (ILEXY4.ZENZI)

# ILEXY FOUR DEPARTURE (RNAV) (ILEXY4.ILEXY) 15JUN23

GEORGETOWN, TEXAS  
GEORGETOWN EXEC (GTU)

SC-3, 28 NOV 2024 to 26 DEC 2024