

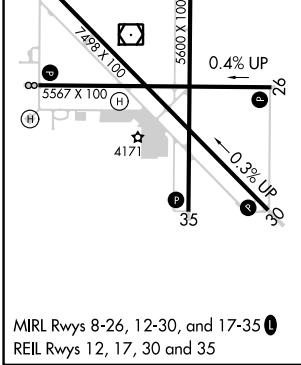
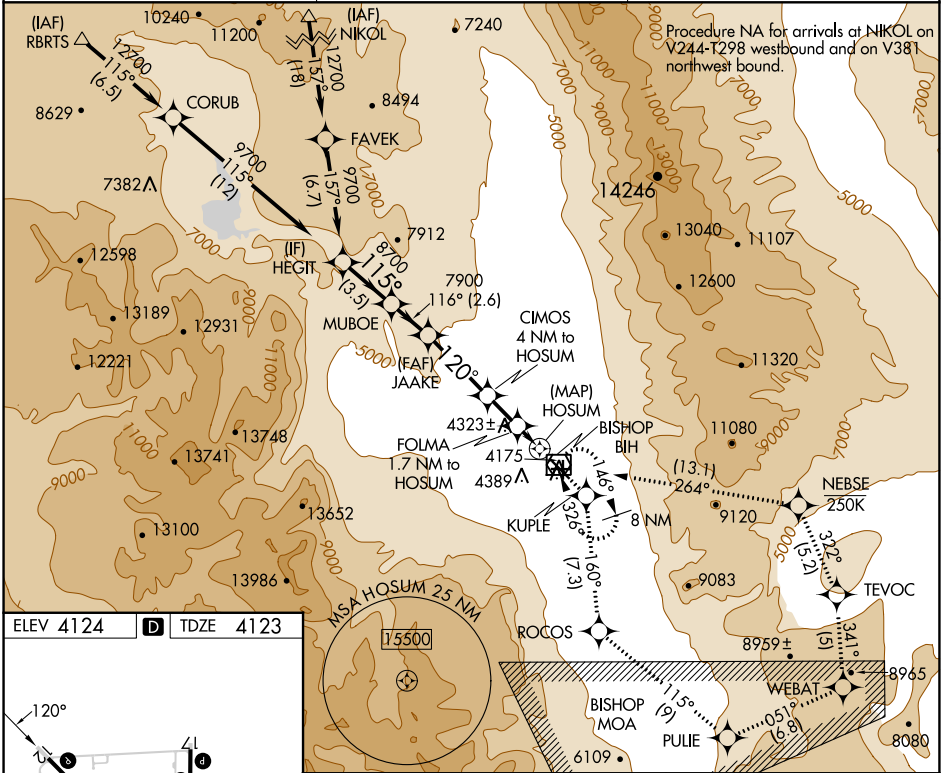
APP CRS	Rwy Idg	7098
120°	TDZE	4123
	Apt Elev	4124

RNAV (GPS) Z RWY 12

BISHOP (BIH)

RNP APCH-GPS.	MISSED APPROACH: (Do not exceed 250 KIAS until NEBSE) Climb to 13000 direct KUPLE and on track 160° to ROCOS and on track 115° to PULIE and on track 051° to WEBAT and on track 341° to TEVOC and on track 322° to NEBSE and on track 264° to BIH VOR/DME and hold.
<p>⚠ Rwy 12, helicopter visibility reduction below 3/4 SM NA.</p> <p>⚠ Missed approach requires minimum climb of 325 feet per NM to 11000; if unable, see RNAV (GPS) Y RWY 12.</p>	

ASOS 119.025	OAKLAND CENTER 125.75 284.65	UNICOM 123.0 (CTAF)
------------------------	--	-------------------------------



HEGIT		Visual Segment - Obstacles.		13000	KUPLE	tr 160°	ROCOS
MUBOE		JAAKE		↑	CIMOS 4 NM to HOSUM	FOLMA 1.7 NM to HOSUM	
9700	8700	7900	6200	5200			
3.5 NM		2.6 NM		4.5 NM		2.3 NM	
1.7 NM		1 NM					
CATEGORY	A	B	C	D			
LNAV MDA	4580-1 1/4		457 (500-1 1/4)		NA		
C CIRCLING	6420-1 1/4 2296 (2300-1 1/4)		6420-1 1/2 2296 (2300-1 1/2)		6420-3 2296 (2300-3)		NA

SW-2, 28 NOV 2024 to 26 DEC 2024

SW-2, 28 NOV 2024 to 26 DEC 2024