

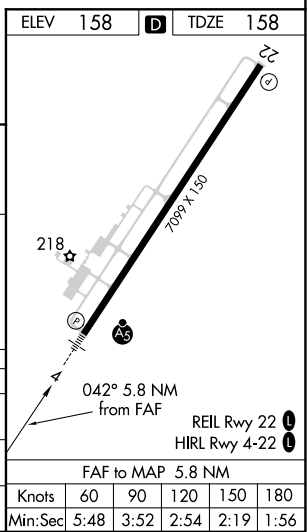
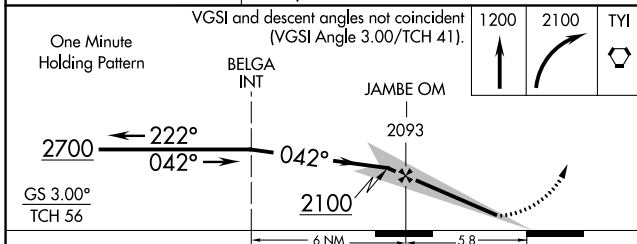
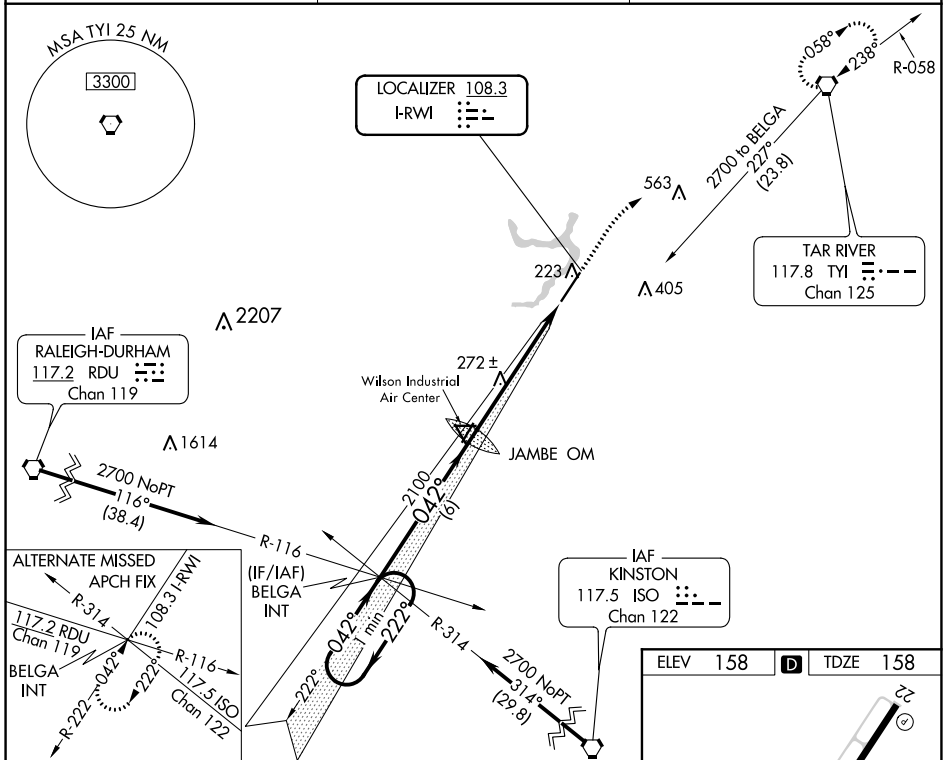
LOC I-RWI	APP CRS	Rwy Idg	<b>7099</b>
<b>108.3</b>	<b>042°</b>	TDZE	<b>158</b>
		Apt Elev	<b>158</b>

# ILS or LOC RWY 4

ROCKY MOUNT/WILSON RGNL (R.WI)

NA	MALS R	MISSED APPROACH: Climb to 2100 then climbing right turn to 2100 direct TYI VORTAC and hold.

ASOS <b>118.875</b>	WASHINGTON CENTER <b>123.85 279.65</b>	UNICOM <b>123.05 (CTAF)</b>
------------------------	---	--------------------------------



CATEGORY	A	B	C	D
S-ILS 4	408-½ 250 (300-½)			
S-LOC 4	540-½ 382 (400-½)	540-¾ 382 (400-¾)		540-¾ 382 (400-¾)
CIRCLING	600-1 442 (500-1)	620-1 462 (500-1)	720-1½ 562 (600-1½)	740-2 582 (600-2)

SE-2, 28 NOV 2024 to 26 DEC 2024

SE-2, 28 NOV 2024 to 26 DEC 2024

FAF to MAP 5.8 NM	Knots	60	90	120	150	180
	Min:Sec	5:48	3:52	2:54	2:19	1:56