

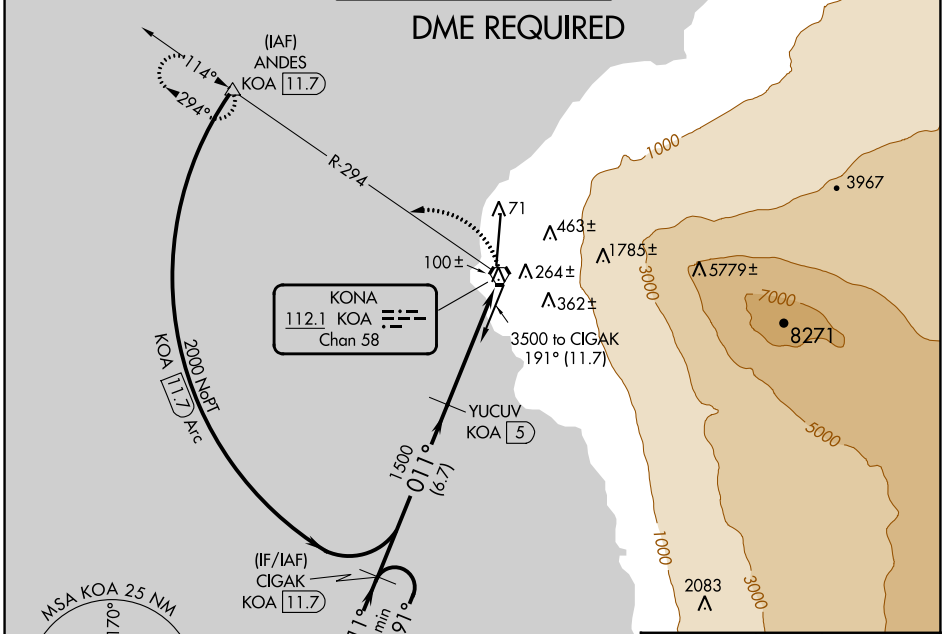
VORTAC KOA 112.1 Chan 58	APP CRS 011°	Rwy Idg 11000 TDZE 37 Apt Elev 47
--	------------------------	--

VOR or TACAN RWY 35

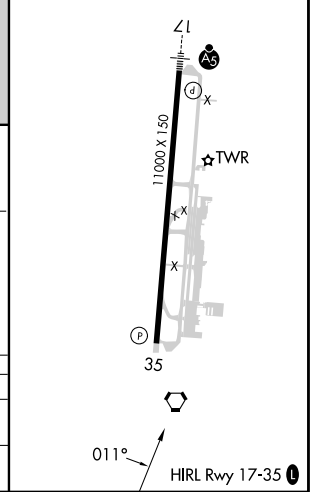
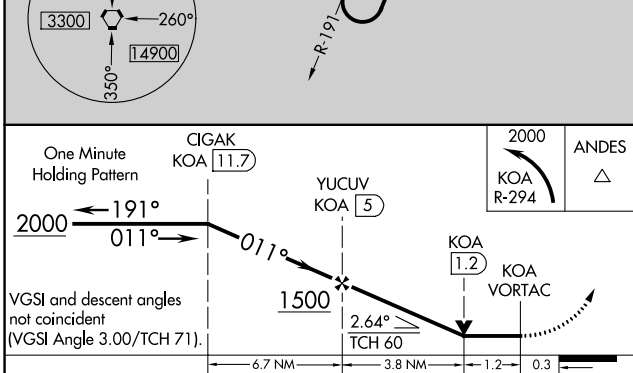
ELLISON ONIZUKA KONA INTL AT KEAHOLE (KOA) (PHKO)

DME required.		MISSED APPROACH: Climbing left turn to 2000 on KOA VORTAC R-294 to ANDES/11.7 DME and hold.		
Circling NA east of Rwy 17-35.				

ATIS 127.4	HCF CENTER 118.45 278.3	KONA TOWER* 120.3(CTAF) 254.3	GND CON 121.9	CLNC DEL 118.6
----------------------	-----------------------------------	---	-------------------------	--------------------------



ELEV 47	D	TDZE 37
---------	----------	---------



CATEGORY	A	B	C	D	E
S-35	600-1	563 (600-1)	600-1 ⁵ / ₈	563 (600-1 ⁵ / ₈)	
C CIRCLING	600-1	553 (600-1)	600-1 ⁵ / ₈ 553 (600-1 ⁵ / ₈)	600-2	553 (600-2)

PAC, 31 OCT 2024 to 26 DEC 2024

PAC, 31 OCT 2024 to 26 DEC 2024